

Rev. June 10, 2024

Product: Ishida ScaleLink Pro 5**Contents:** Load Current Settings Then Restore Scale and Database Settings

Authorized distributors and their employees can view or download this document from the Rice Lake Retail Solutions distributor site at www.ricelake.com/retail.

Background

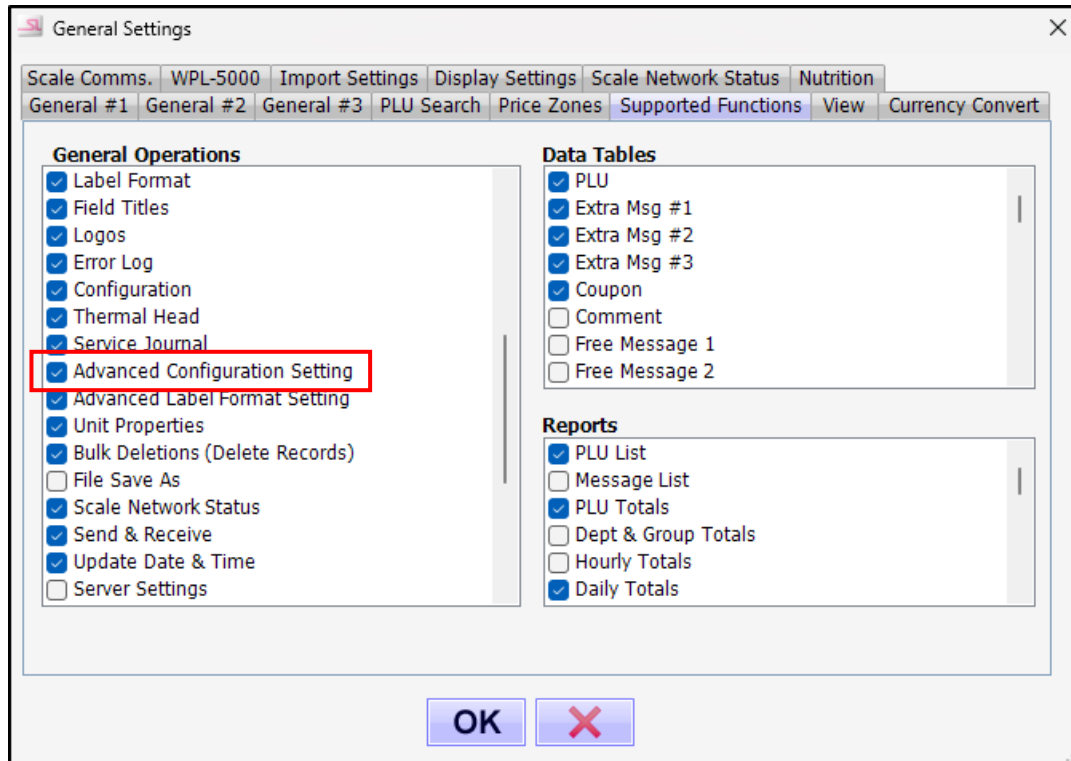
When ScaleLink Pro 5 is updated a "clean" installation is always recommended where the current USA configuration file is used. This will ensure the correct settings for the new version are installed. If, however, the option to use "Setup from previous installation" is selected the new settings will be overwritten by the previous setup. Using the previous settings eliminates the need to reconfigure SLP-5 but it also means some required settings may not be available.

The following steps cover loading the current USA settings while also saving and reloading the scale and databases settings which are the two most time-consuming steps to manually enter. This procedure ensures SLP-5 has the latest settings and also restores the previous scale and database settings.

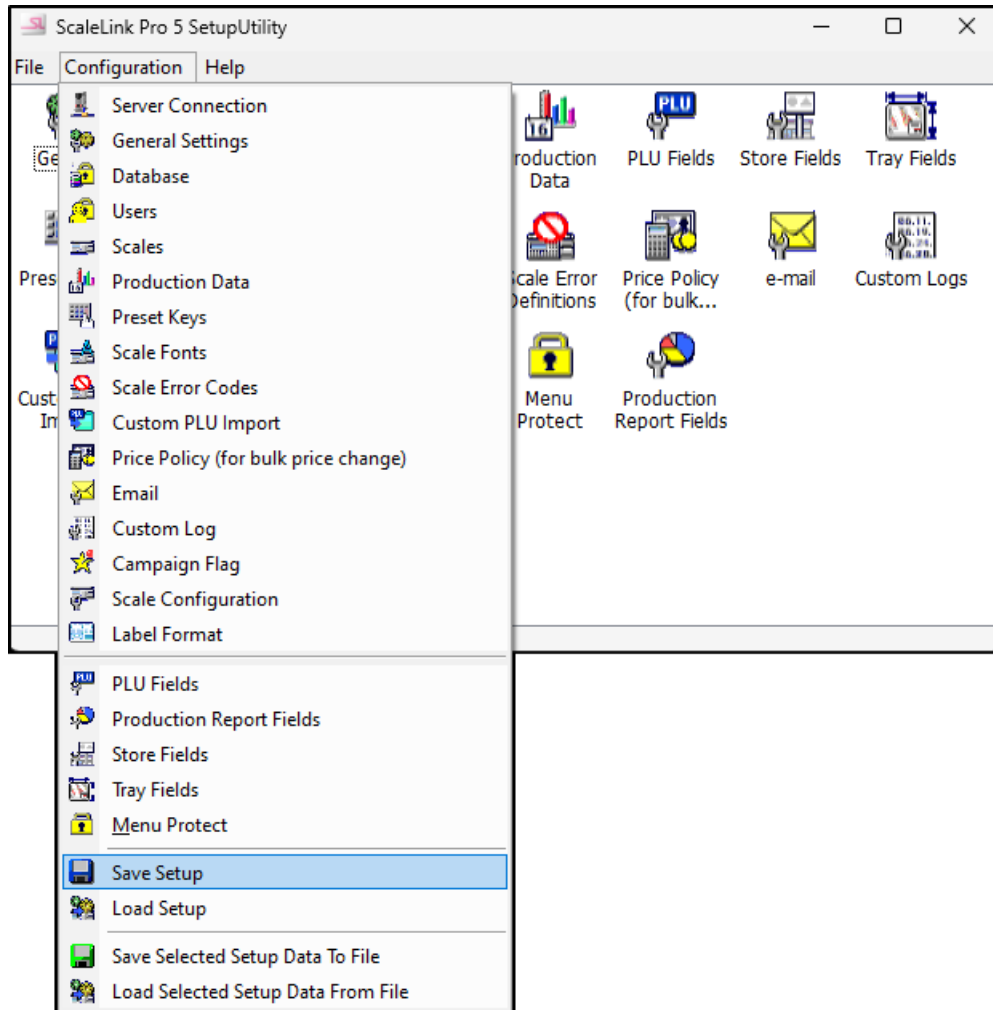
Procedure

This presumes a new version of ScaleLink Pro 5 was installed and the "Setup from previous installation" option was selected.

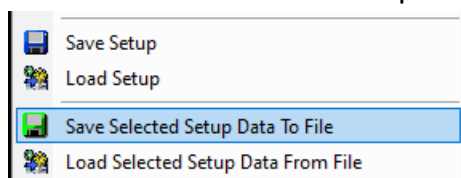
1. Document the enabled PLU Fields, Users, etc. as all settings other than the Scales and Databases will be reset to default.
2. Open the Setup Utility.
3. Select *General* → *Supported Functions*.



4. Enable "Advanced Configuration Settings" in the *General Operations* window.
5. Click "OK", close and reopen the Setup Utility.
6. Select "Save Setup" in the *Configuration* menu.



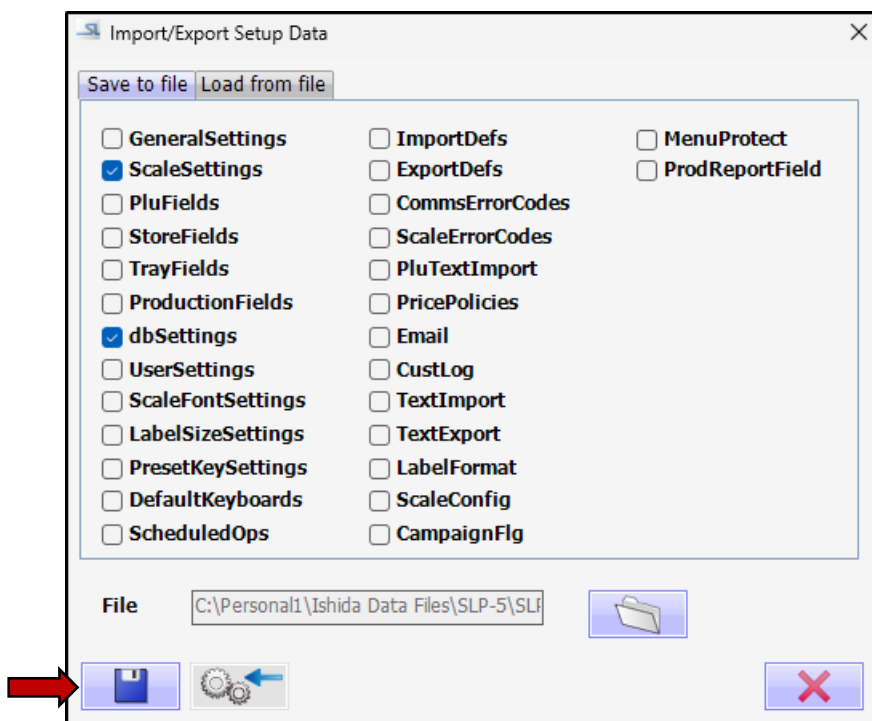
7. Select a location and name the file to create a safety backup.
8. Select "Save Selected Setup Data To File" in the *Configuration* menu.



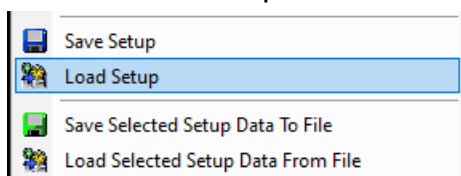
9. Click the **Folder** icon.
10. Select a location and name the file to save the scale and database configuration settings.



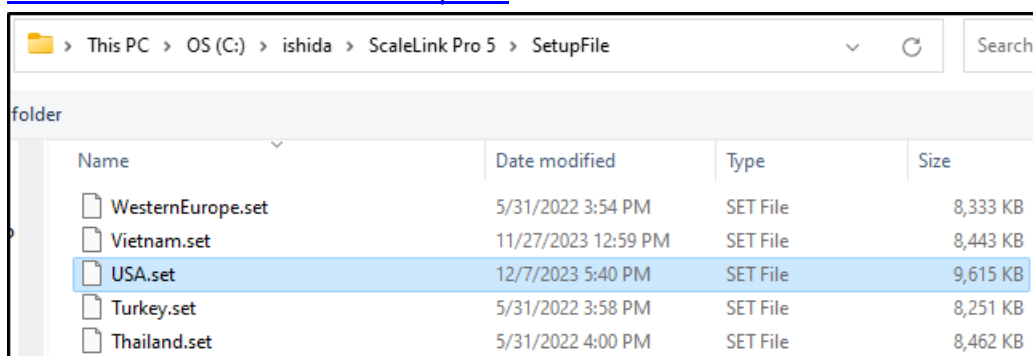
Note this file name and location, it will be used to reload the scales and databases configuration settings.



11. Check "ScaleSettings" and "dbSettings" only.
12. Click the **Save** icon.
13. Click **OK** at the successful save message.
14. Close the *Import/Export Setup Data* window.
15. Select "Load Setup" in the *Configuration* menu.



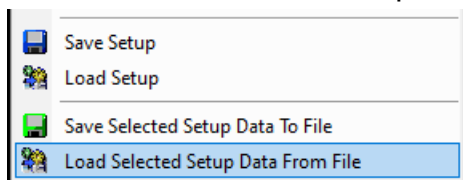
16. Click **OK** at the "This will update all system settings..." message.
17. Navigate to the ScaleLink Pro 5 folder containing the default setup files:
<C:\ishida\ScaleLink Pro 5\SetupFile>



18. Select the "USA.set" file and click **Open**.

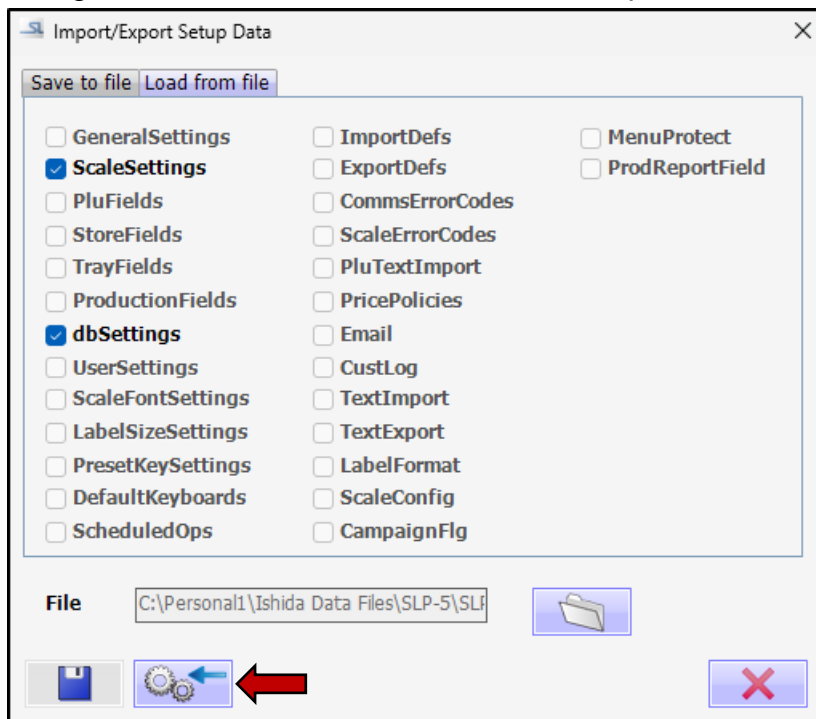
19. Installation takes approximately 15 seconds.

20. Select "Load Selected Setup Data From File" in the *Configuration* menu.



21. Click the **Folder** icon.

22. Navigate to and select the file created in step 10.



23. Check "ScaleSettings" and "dbSettings".

24. Click the **Load From File** icon.

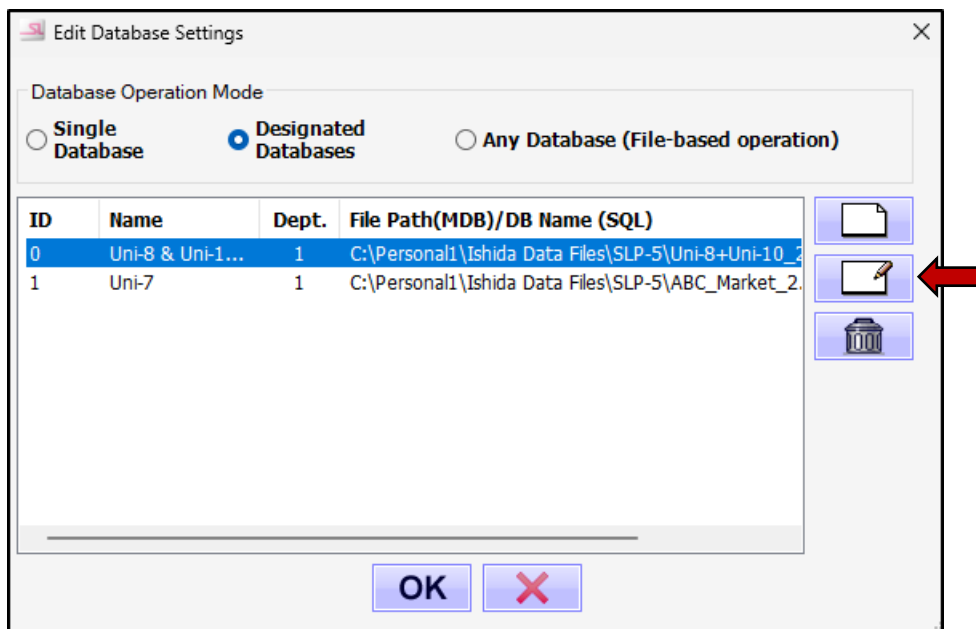
25. Click **OK** at the successful load message.

26. Close the *Import/Export Setup Data* window.

27. Select *Scale Setup* and confirm the scales are present.

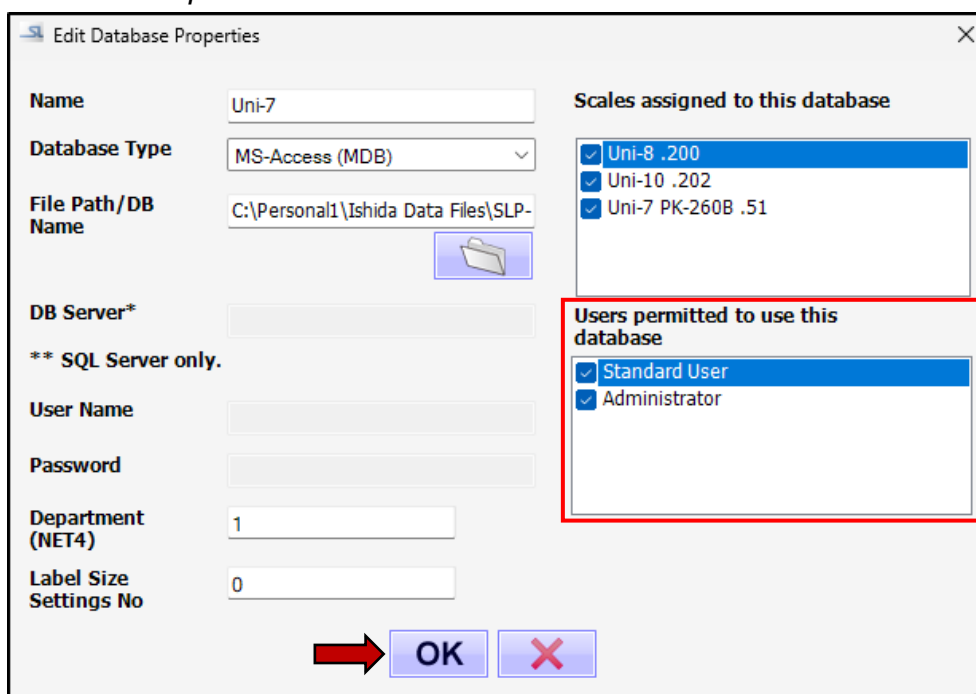
28. Select *Database Setup* and confirm the databases are present.

29. If the "Designated Databases" option is used the *Users* must be enabled for each database. If other users besides the default Standard User and Administrator are used stop and add them before proceeding.



30. Highlight the first database and select **Edit**.

31. In the *Users permitted to use this database* window check each user as needed.



32. Click **OK** and repeat for all databases.

33. Click **OK** to close the *Edit Database Settings* window.

34. Configure the PLU Fields, Users, etc. as noted in step 1.

35. Close the Setup Utility.

Note

- Other settings that may be saved and restored are listed in the *Import/Export Setup Data* window besides the scales and databases. Do not select other settings as they will overwrite the new settings loaded by the USA file. Scales and Databases should not have any effect on the new SLP-5 settings.



© Rice Lake Weighing Systems Specifications subject to change without notice.
Rice Lake Weighing Systems is an ISO 9001 registered company.

230 W. Coleman St. • Rice Lake, WI 54868 • USA
U.S. 800-472-6703 • Canada/Mexico 800-321-6703 • International 715-234-9171 • Europe +31 (0)26 472 1319

www.ricelake.com/retail

www.ricelake.mx

www.ricelake.eu

www.ricelake.co.in