

VPG Tedea-Huntleigh

TABLE OF CONTENTS

S-BEAMS

Page 305

620, STAINLESS STEEL



Ideally suited for harsh environments, lever conversions, hoppers/tanks, vibratory feeders, general -purpose weighing and force measurement applications. The stainless steel, welded cavity design provides protection against water and corrosive materials. Capacities range from 500 to 2,000 kg. Complete with 5 m of load cell cable.



SINGLE-ENDED

Page 306

3411/3421, ALLOY STEEL AND STAINLESS STEEL



Single-ended beam available in both alloy and stainless steel with NTEP Certification. These products are ideal for low-profile platforms, pallet truck weighers, tanks and silos while providing stability for more severe weighing applications. Both versions are available in 1,000 to 5,000 lb capacities, with the 10,000 lb capacity module available in stainless steel. Complete with 10 ft of load cell cable.



Page 307

3510-NTEP, STAINLESS STEEL



Low profile and all-welded sealing combined with high accuracy make the 3510 ideally suited for low-profile platforms, weigh modules, tanks and silos. Hermetic sealing and polyurethane shielded cable enable this load cell to function in harsh environments while maintaining its operating specifications. Capacities range from 1,000 to 4,000 lb.



Page 308

3510-OIML, STAINLESS STEEL



OIML-approved, 6,000 division single-ended beam. Low profile and all-welded sealing combined with high accuracy makes this model suited for low-profile platforms, weigh modules, tanks and silos. Polyurethane shielded cable enables function in harsh environments while maintaining its operating specifications. Capacities range from 500 to 5,000 kg.



Page 309

355, STAINLESS STEEL



Welded stainless steel construction, welded sealing and polyurethane shielded cable enables function in harsh environments while maintaining its operating specifications. Suitable for low-profile platforms, weighing and packing machines, electromechanical conversions and general-purpose weighing applications. Capacities range from 5 to 500 kg.



SINGLE POINTS

Page 310

1022, ALUMINUM



Low-profile, single point load cell designed for direct mounting in low-cost platforms. Anodized aluminum construction is combined with two-beam machined technology to provide an affordable load cell option. Capacities range from 3 to 35 kg. Complete with 0.5 or 3 m of load cell cable.



Page 311

1010/1015, ALUMINUM



Off-center loading load cell designed for direct mounting of a weighing platform and simplified construction of platform scales. Long-term stability and durability are maintained. Load cells with potted cavities are available for improved performance in damp environments. The model 1015 has a balanced bridge for applications where multiple cells are used. Capacities range from 3 to 90 kg.



VPG®
TEDEA-HUNTLEIGH®

VPG Tedea-Huntleigh

SINGLE POINTS

Page 312

1030, ALUMINUM



This low-profile, three-beam single point load cell is insensitive to off-center loads, providing accurate results. Coated with a unique humidity-resistant protective coating to assure long-term stability in harsh environments and extreme temperatures. Capacities range from 5 to 10 kg. Complete with 1 m of load cell cable.



Page 313

1042, ALUMINUM



A lower profile single point load cell for platform weighing. This model is constructed of aluminum and is a two-beam design. This design offers high immunity to side forces and is specially coated to provide humidity resistance. Capacities range from 1 to 100 kg. Complete with 3 m of load cell cable.



Page 314

1040, ALUMINUM



Low-profile, off-center loading load cell. Designed for direct mounting of weighing platforms, hanging scales and other low-capacity beam applications. Long-term stability and durability are maintained. Load cells with potted cavities are available for improved performance in damp environments. Capacities range from 5 to 100 kg.



Page 315

1130, STAINLESS STEEL



Stainless steel, single point load cell designed for high performance in harsh environments. This product is primarily designed for platform weighing but is cost-effective to make it an appropriate selection for numerous applications. Capacities range from 7.5 to 100 kg. Complete with 1.5, 3 or 8 m of load cell cable.



Page 316

1140, STAINLESS STEEL



Low-profile, off-center loading load cell designed for direct mounting of weighing platforms, hanging scales and other low capacity beam applications. Stainless steel construction and a unique humidity-resistant protective coating provide long-term stability, even in harsh environments. Load cells are potted for improved performance in damp environments. Capacities range from 15 to 150 kg.



Page 317

1240, STAINLESS STEEL



Compact in design, this low-profile single point load cell is ideally suited for light-industrial or people-weighing applications where deck height is a concern. The three-beam design makes the load cell less likely to be impacted by side forces and mounting imperfections. It features stainless steel construction and humidity-resistant coating for use in harsh environments with extreme temperatures. Capacities range from 200 to 250 kg. Complete with 3 m of load cell cable.



SINGLE POINTS

Page 318

1142, STAINLESS STEEL



The perfect selection for new or retrofit scales with compact size, high accuracy and low cost. Stainless steel construction with a humidity-resistant protective coating helps ensure stable operation in damp environments. NTEP Certified and available with OIML approval. Capacities range from 10 to 150 kg. Complete with 10 ft of load cell cable.



Page 319

1260, ALUMINUM



High-capacity, off-center loading aluminum single point load cell. This model is of the two-beam design and is specially coated to ensure durability in harsh environments. Capacities range from 50 to 635 kg. Complete with 3 m of load cell cable.



Page 320

1260S, ALUMINUM



This single-point, off-center loading aluminum load cell is designed for high-capacity applications and harsh environments. NTEP Certified to 10,000 divisions. Capacities range from 75 to 635 kg. Complete with 3 m of load cell cable.



Page 321

1263, ALUMINUM



Constructed of high-quality aluminum and offers high immunity to side loads, making it suitable for a wide array of applications like bench scales and process weighing. Its special humidity-resistant protective coating helps ensure long-term stability over the entire compensated range. OIML-approved capacities range from 50 to 635 kg. Complete with 1.5 m of load cell cable.



Page 322

1250, ALUMINUM



High-capacity, off-center loading load cell accurately weighs loads from 50 to 1,000 kg. Long-term stability and durability are maintained. Load cells are potted for improved performance in damp environments.



Page 323

1320, ALUMINUM



Single point load cell featuring individual adjustment to eliminate corner errors and direct mounting of low-profile platforms to simplify the construction of floor scales, weigh bars, hanging scales and other types of weighing devices. Capacities range from 1,000 to 2,000 kg.



VPG Tedea-Huntleigh

SINGLE POINTS

Page 324

1510, STAINLESS STEEL



A stainless steel, welded-seal single point load cell ideally suited for washdown applications. Suitable for use with a variety of platform and monorail scales in sanitary environments. Capacities range from 100 to 500 kg.



Page 325

240, ALLOY STEEL/STAINLESS STEEL, FLUID DAMPED



Designed to decrease weighing time and improve weighing accuracy in high-speed weighing applications. When damped, this model endures harsh conditions with shock-loading applications longer than undamped models. Sealed for protection in washdown situations. Capacities range from 2 to 50 kg.



Page 326

9010, ALUMINUM, FLUID DAMPED



A self-contained weighing module for use in repeated shock-loading applications or where fast weighing and settling times are required. Each is custom-manufactured per specific application requirements. Capacities range from 3 to 50 kg.



Page 327

9010 APPLICATION DEFINITION FORM

PLANAR BEAM

Page 328

380, ALUMINUM



Low-profile planar beam designed for a range of capacities and direct mounting in platform scales. Capacities range from 7.5 to 150 kg. Complete with 1.5 m of flat ribbon PVC cable.



COMPRESSION CANISTER

Page 329

220, STAINLESS STEEL



Bending ring load cell with low profile design ideal for high-capacity weighing applications, including weighbridges, tanks, silos, high-capacity platform scales and force measurement. OIML-approved capacities range from 5,000 to 30,000 kg.



Page 330

120, STAINLESS STEEL



Stainless steel, welded-seal compression canister offered in capacities from 20,000 to 50,000 kg. Includes load cup and load pin.



Picture is a representation of actual product

Approvals



Available upon request

Available upon request

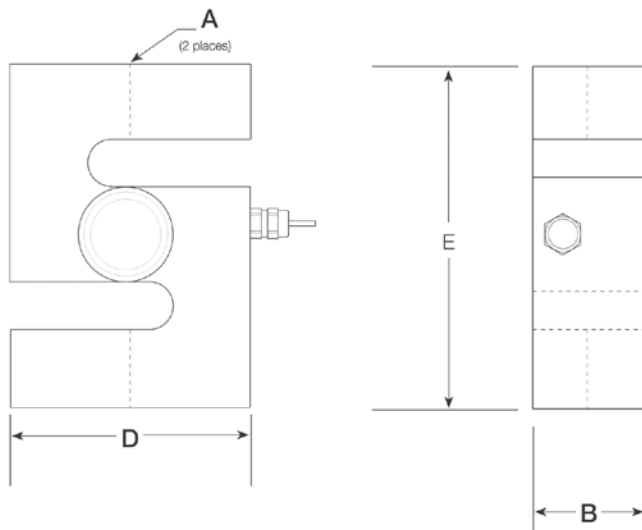
Order Information

Load Rating	Part #	Est. Weight	Price
500 kg	36389	4 lb	\$895.00
1,000 kg	36390	4 lb	\$895.00
2,000 kg	36391	4 lb	\$895.00

Dimensions

Rated Capacity	A	B	D	E
kg/mm				
500 to 1,000	1/2-20 UNF	33.5	73.2	94.0
2,000	3/4-16 UNF	33.5	73.2	94.0

Metric threads available



Weigh Module Available

RICE LAKE WEIGHING SYSTEMS
ITCM Isolated Tension Cell Mount.....page 34

Specifications

Full Scale Output:
2.0 mV/V

Output Resistance:
350 (± 3) ohm

Input Resistance:
400 (± 20) ohm

Material/Finish:
Stainless steel

Temperature:
Compensated:
14 °F to 104 °F (-10 °C to 40 °C)
Operating:
0 °F to 150 °F (-18 °C to 65 °C)

Seal Type:
Welded-seal, IP68

Safe Overload:
150% full scale

Rated Excitation:
5 to 10 VDC (15 V maximum)

Combined Error:
0.02% full scale

Insulation Resistance:
1,000 megohm

Cable Length:
5 m

Cable Diameter:
0.220 in
Polyurethane jacket

Cable Color Code:
Blue +Excitation
Black -Excitation
White +Signal
Red -Signal
Green +Sense
Grey -Sense

Warranty:
One-year limited

Approvals:
NTEP
Ex (Available upon request)
OIML (Available upon request)

VPG®
TEDEA-HUNTLEIGH®

3411/3421

Alloy/Stainless Steel, Environmentally Sealed, NTEP Certified 1:3,000 Single Cell, 1:5,000 Multiple Cell Class III, IP67



Picture is a representation of actual product

Approvals



Available upon request

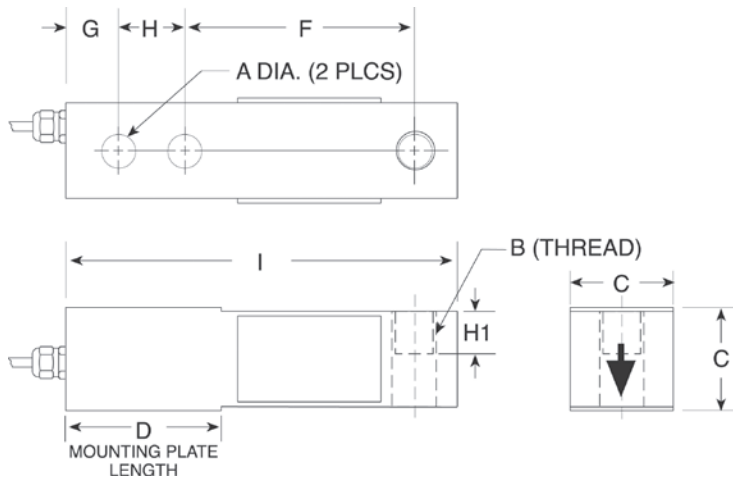
Available upon request

Order Information

Load Rating	Part #	Est. Weight	Price
Alloy Steel			
1,000 lb	29903	3 lb	\$325.00
2,500 lb	29904	3 lb	\$325.00
5,000 lb	29906	4 lb	\$325.00
Stainless Steel			
1,000 lb	47871	3 lb	\$450.00
2,500 lb	47872	3 lb	\$450.00
4,000 lb	47873	3 lb	\$450.00
5,000 lb	47874	4 lb	\$515.00
10,000 lb	47875	4 lb	\$575.00

Dimensions

Rated Capacity	A	B	C	D	F	G	H	H1	I
lb/in									
1,000 to 4,000	0.53	1/2-20 UNF	1.24	2.25	3.00	0.63	1.00	0.60	5.12
5,000 to 10,000	0.78	3/4-16 UNF	1.49	3.00	3.75	0.75	1.50	0.75	6.75



Interchangeable Products

- RICE LAKE WEIGHING SYSTEMS
RL30000I.....page 112
- RICE LAKE WEIGHING SYSTEMS
RL39123*.....page 115
- VPG® REVERE
5123.....page 246
- VPG REVERE
9123*.....page 247

Weigh Module Available

- RICE LAKE WEIGHING SYSTEMS
RL50210TA.....page 39
- RICE LAKE WEIGHING SYSTEMS
RL1800 Series.....page 50

*Stainless steel

Specifications

- Full Scale Output:**
3.0 mV/V
- Output Resistance:**
351 (± 5) ohm
- Input Resistance:**
385 (± 10) ohm
- Material/Finish:**
High-alloy, nickel plated
Stainless steel
- Temperature:**
Compensated:
14 °F to 104 °F (-10 °C to 40 °C)
Operating:
0 °F to 150 °F (-18 °C to 65 °C)
- Seal Type:**
Environmentally sealed, IP67
- Safe Overload:**
150% full scale
- Safe Sideload:**
100% full scale
- Rated Excitation:**
5 to 10 VDC (15 V maximum)
- Combined Error:**
0.03% full scale
- Insulation Resistance:**
2,000 megohm
- Deflection at Capacity:**
0.015 in
- Cable Length:**
10 ft
- Cable Diameter:**
0.200 in
PVC jacket
- Cable Color Code:**
Red +Excitation
Black -Excitation
Green +Signal
White -Signal
Blue +Sense
Brown -Sense
- Warranty:**
One-year limited
- Approvals:**
NTEP
OIML (Available upon request)
cFMus
Ex (Available upon request)



Picture is a representation of actual product

Approvals

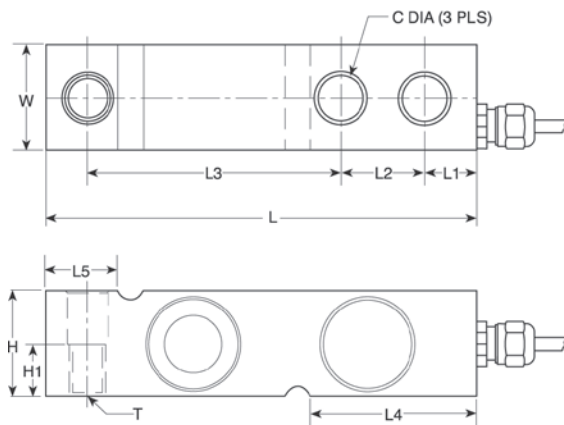


Order Information

Load Rating	Part #	Est. Weight	Price
1,000 lb	36458	3 lb	\$675.00
1,500 lb	36459	3 lb	\$675.00
2,500 lb	36460	3 lb	\$675.00
4,000 lb	36461	3 lb	\$675.00

Dimensions

Rated Capacity	C	H	H1	L	L1	L2	L3	L4	L5	T	W
lb/in											
1,000 to 4,000	0.53	1.26	0.63	5.12	0.62	1.00	3.00	1.97	0.91	1/2-14 UNF	1.26



Interchangeable Products

- VPG® SENSORTRONICS®
65083..... page 284
- VPG® CELTRON®
SQB-HSS.....page 192

Weigh Module Available

- RICE LAKE WEIGHING SYSTEMS
RL1700 HE..... page 29

Specifications

- Full Scale Output:**
3.0 mV/V
- Output Resistance:**
350 (± 3) ohm
- Input Resistance:**
415 (± 15) ohm
- Material/Finish:**
Stainless steel
- Temperature:**
Compensated:
14 °F to 104 °F (-10 °C to 40 °C)
Operating:
0 °F to 150 °F (-18 °C to 65 °C)
- Seal Type:**
Welded-seal, IP68
- Safe Overload:**
150% full scale
- Safe Sideload:**
100% full scale
- Rated Excitation:**
5 to 10 VDC (15 V maximum)
- Combined Error:**
0.02% full scale
- Insulation Resistance:**
1,000 megohm
- Deflection at Capacity:**
0.015 in
- Cable Length:**
16 ft
- Cable Diameter:**
0.220 in
Polyurethane jacket
- Cable Color Code:**
Blue +Excitation
Black -Excitation
White +Signal
Red -Signal
Green +Sense
Gray -Sense
- Warranty:**
One-year limited
- Approvals:**
NTEP
cFMus

**VPG®
TEDEA-HUNTLEIGH®**

SINGLE-ENDED BEAM
3510-OIML

Stainless Steel, Welded Seal, OIML C3, IP68



Picture is a representation of actual product

Approvals



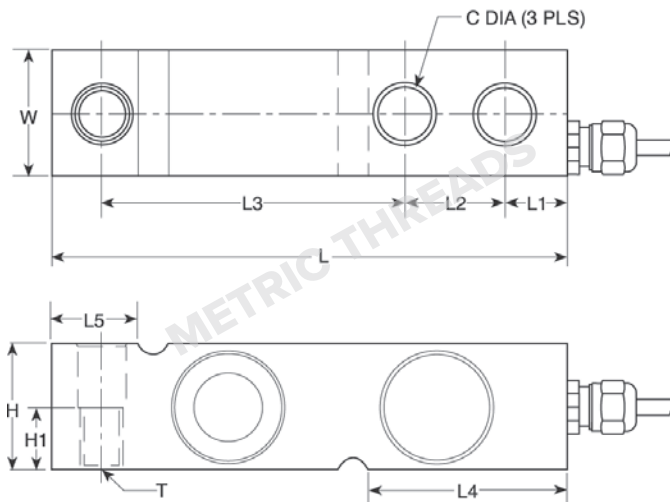
Available upon request

Order Information

Load Rating	Part #	Est. Weight	Price
500 kg	30161	3 lb	\$675.00
1,000 kg	30162	3 lb	\$675.00
2,000 kg	30163	3 lb	\$675.00
5,000 kg	30164	5 lb	\$675.00

Dimensions

Rated Capacity	C	H	H1	L	L1	L2	L3	L4	L5	T	W
kg/mm											
500 to 2,000	13.5	32.0	16.0	130.0	15.8	25.4	76.2	50.5	23.5	M12 × 1.75 Thrd.	32.0
5,000	20.5	48.0	—	171.5	19.0	38.1	95.3	70.0	37.0	—	36.5



Interchangeable Products

RICE LAKE WEIGHING SYSTEMS
RLHTO page 117

Weigh Module Available

RICE LAKE WEIGHING SYSTEMS
RL1700 HE page 29

Specifications

- Full Scale Output:**
2.0 mV/V
- Output Resistance:**
350 (± 3) ohm
- Input Resistance:**
380 (± 10) ohm
- Material/Finish:**
Stainless steel
- Temperature:**
Operating:
0 °F to 150 °F (-18 °C to 65 °C)
- Seal Type:**
Welded-seal, IP68
- Safe Overload:**
150% full scale
- Safe Sideload:**
100% full scale
- Rated Excitation:**
5 to 10 VDC (15 V maximum)
- Combined Error:**
0.02% full scale
- Insulation Resistance:**
2,000 megohm
- Deflection at Capacity:**
0.015 in
- Cable Length:**
5 m
- Cable Diameter:**
5.5 mm
Polyurethane jacket
- Cable Color Code:**
Blue +Excitation
Black -Excitation
White +Signal
Red -Signal
Green +Sense
Gray -Sense
- Warranty:**
One-year limited
- Approvals:**
OIML
cFMus
Ex (Available upon request)

TEDEA-HUNTLEIGH® VPC®



Picture is a representation of actual product

Approvals



Available upon request

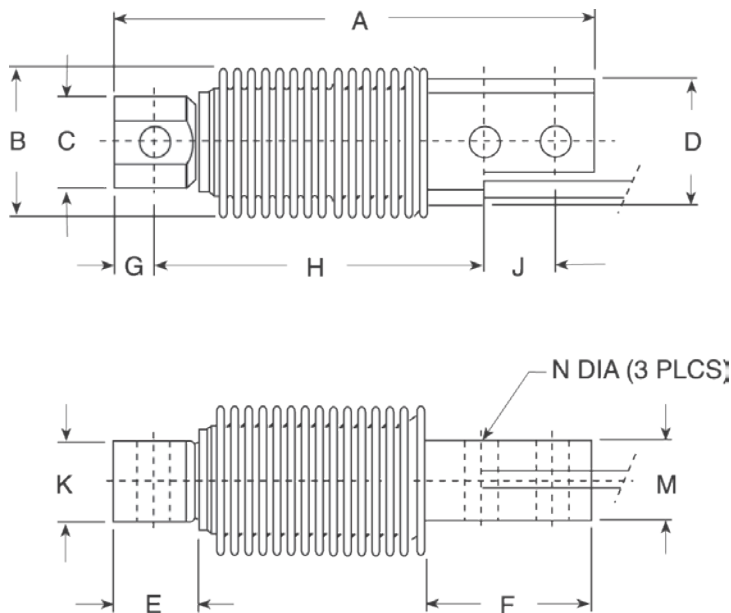
Available upon request

Order Information

Load Rating	Part #	Est. Weight	Price
5 kg	30165	2 lb	\$575.00
10 kg	30166	2 lb	\$575.00
20 kg	30167	2 lb	\$575.00
50 kg	30168	2 lb	\$575.00
100 kg	30169	2 lb	\$575.00
200 kg	30170	2 lb	\$575.00
500 kg	36463	2 lb	\$575.00

Dimensions

Rated Capacity	A	B	C	D	E	F	G	H	J	K	M	N
kg/mm												
5 to 500	120.0	40.0	23.0	32.0	20.5	45.5	10.0	82.0	18.0	20.0	20.0	8.2



Interchangeable Products

- RICE LAKE WEIGHING SYSTEMS
- RL9018SS**page 111
- VPG® REVERE
- SHB**..... page 253
- HBK®
- Z6** page 226

Weigh Module Available

- RICE LAKE WEIGHING SYSTEMS
- RL1700 HE** page 29

Specifications

- Full Scale Output:**
2.0 mV/V
- Output Resistance:**
355 (± 5) ohm
- Input Resistance:**
380 (± 10) ohm
- Material/Finish:**
Stainless steel
- Temperature:**
Compensated:
14 °F to 104 °F (-10 °C to 40 °C)
Operating:
0 °F to 150 °F (-18 °C to 65 °C)
- Seal Type:**
Welded-seal, IP68
- Safe Overload:**
150% full scale
- Rated Excitation:**
5 to 10 VDC (15 V maximum)
- Combined Error:**
0.02% full scale
- Insulation Resistance:**
2,000 megohm
- Deflection at Capacity:**
0.4 mm
- Cable Length:**
3 m
- Cable Diameter:**
5.5 mm
Polyurethane jacket
- Cable Color Code:**
Blue +Excitation
Black -Excitation
White +Signal
Red -Signal
Green +Sense
Grey -Sense
- Warranty:**
One-year limited
- Approvals:**
NTEP
OIML (Available upon request)
cFMus
Ex (Available upon request)

VPG®
TEDEA-HUNTLEIGH®



Picture is a representation of actual product

Approvals



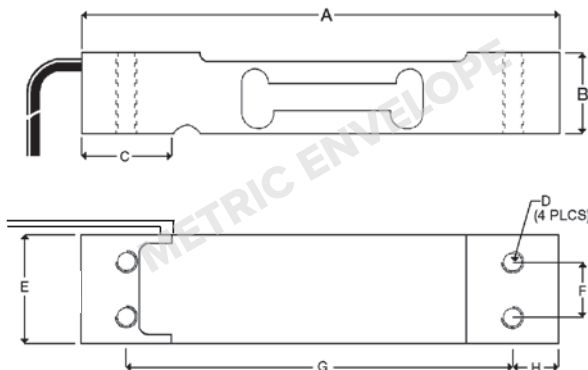
Available upon request

Order Information

Load Rating	Part #	Est. Weight	Price
1.5 ft Cables NTEP Certified			
3 kg	41135	2 lb	\$150.00
5 kg	41136	2 lb	\$150.00
7 kg	41137	2 lb	\$150.00
10 kg	41138	2 lb	\$150.00
15 kg	41139	2 lb	\$150.00
30 kg	41141	2 lb	\$150.00
35 kg	41142	2 lb	\$150.00
10 ft Cables NTEP Certified			
3 kg	132269	2 lb	\$150.00
5 kg	132270	2 lb	\$150.00
7 kg	132271	2 lb	\$150.00
10 kg	132272	2 lb	\$150.00
15 kg	132273	2 lb	\$150.00
20 kg	132274	2 lb	\$150.00
30 kg	132275	2 lb	\$150.00
35 kg	132276	2 lb	\$150.00
1.5 ft Cables OIML Approved			
10 kg	150770	2 lb	\$150.00
15 kg	150771	2 lb	\$150.00
20 kg	150772	2 lb	\$150.00
30 kg	150773	2 lb	\$150.00

Dimensions

Rated Capacity	A	B	C	D	E	F	G	H
kg/mm								
3 to 7	130.0	22.0	25.0	M6 × 1.0	25.4	15.0	106.0	12.0
10 to 30	130.0	22.0	25.0	M6 × 1.0	30.0	15.0	106.0	12.0
35	130.0	22.0	25.0	M6 × 1.0	40.0	15.0	106.0	12.0



Interchangeable Products

- RICE LAKE WEIGHING SYSTEMS
- RL1521A..... page 159
- VPG® CELTRON®
- LPS..... page 197
- VPG® BLH®
- C2G1
- NMB®
- C2G1

Specifications

- Full Scale Output:** 2.0 mV/V
- Output Resistance:** 350 (± 3) ohm
- Input Resistance:** 415 (± 15) ohm
- Material/Finish:** Anodized aluminum
- Temperature:**
 - Compensated: 14 °F to 104 °F (-10 °C to 40 °C)
 - Operating: 0 °F to 150 °F (-18 °C to 65 °C)
- Seal Type:** Environmentally sealed, IP66
- Safe Overload:** 150% full scale
- Rated Excitation:** 5 to 10 VDC (15 V maximum)
- Combined Error:** 0.02% full scale
- Insulation Resistance:** 2,000 megohm
- Cable Length:** 3 m, 0.5 m
- Cable Diameter:** 3.5 mm, PVC jacket
- Cable Color Code:**
 - Green +Excitation
 - Black -Excitation
 - Red +Signal
 - White -Signal
- Max Platform Size:** 0.35 × 0.35 mm
- Warranty:** One-year limited
- Approvals:**
 - NTEP
 - OIML
 - cFMus
 - Ex (Available upon request)

TEDEA-HUNTLEIGH® VPG®



Picture is a representation of actual product

Approvals



Order Information

Load Rating	Part #	Est. Weight	Price
1010 NTEP Certified, Potted			
10 kg	33727	2 lb	\$215.00
15 kg	33728	2 lb	\$215.00
20 kg	33729	2 lb	\$215.00
30 kg	33730	2 lb	\$215.00
50 kg	33731	2 lb	\$215.00
1010 Non-NTEP, Potted			
5 kg	17462	2 lb	\$215.00
7 kg	17463	2 lb	\$215.00
10 kg	17464	2 lb	\$215.00
20 kg	17482	2 lb	\$215.00
30 kg	17475	2 lb	\$215.00
50 kg	17476	2 lb	\$215.00
90 kg	17471	2 lb	\$215.00
1010 NTEP Certified, Unpotted			
5 kg	33732	2 lb	\$198.00
7 kg	33733	2 lb	\$198.00
1010 Non-NTEP, Unpotted			
3 kg	17481	1.2 lb	\$198.00
1015 NTEP Certified, Potted			
7 kg	188806	2 lb	\$230.00
10 kg	188807	2 lb	\$230.00
15 kg	188808	2 lb	\$230.00
20 kg	188809	2 lb	\$230.00
30 kg	188810	2 lb	\$230.00
50 kg	188811	2 lb	\$230.00
1015 Non-NTEP, Potted			
3 kg	188804	1.2 lb	\$230.00

Note: Model 1015 has M6 metric threads

Dimensions

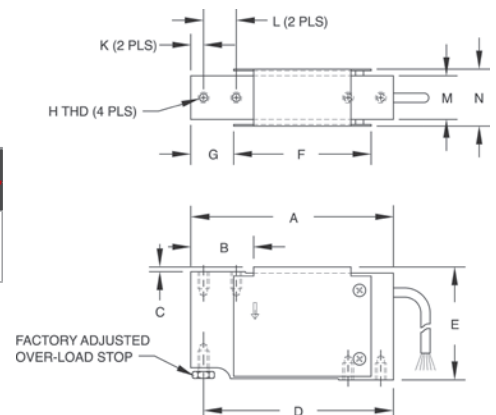
Rated Capacity	A	B	C	D	E	F	G	H	K	L	M	N
kg/mm												
3 to 90	118.0	34.0	3.0	110.5	66.0	80.0	25.0	(1010) 1/4-20 UNC x 13 DP (1015) M6 Metric	7.5	19.1	25.4	33.5

Interchangeable Products

RICE LAKE WEIGHING SYSTEMS
RL1010.....page 160

Specifications

- Full Scale Output:** 2.0 mV/V
- Output Resistance:** 350 (± 3) ohm
- Input Resistance:** Model 1010: 415 (± 15) ohm
Model 1015: 350 (± 3) ohm
- Material/Finish:** Aluminum
- Temperature:** Compensated: 14 °F to 104 °F (-10 °C to 40 °C)
Operating: 0 °F to 150 °F (-18 °C to 65 °C)
- Seal Type:** Environmentally sealed
Potted: IP67
Unpotted: IP65
- Safe Overload:** 150% at center of loading point, full scale
- Rated Excitation:** 5 to 10 VDC (15 V maximum)
- Combined Error:** 0.02% full scale
- Deflection at Capacity:** 0.4 mm
- Cable Length:** 3 m
- Cable Diameter:** 5 mm
PVC jacket
- Cable Color Code:** Green +Excitation
Black -Excitation
Red +Signal
White -Signal
Blue +Sense
Brown -Sense
- Max Platform Size:** 400.05 x 400.05 mm
- Warranty:** One-year limited
- Approvals:** NTEP
cFMus

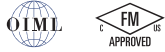


VPG®
TEDEA-HUNTLEIGH®



Picture is a representation of actual product

Approvals

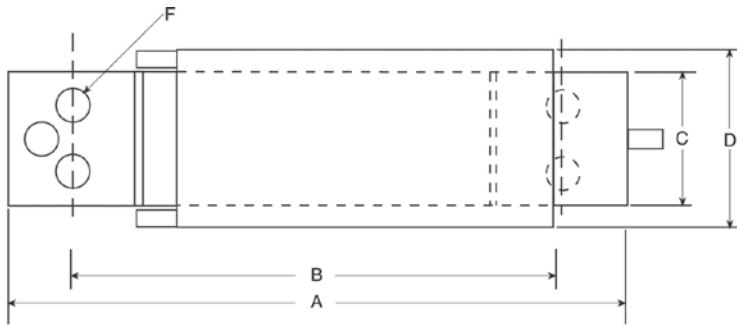


Order Information

Load Rating	Part #	Est. Weight	Price
5 kg	47883	1 lb	\$295.00
7 kg	47884	1 lb	\$295.00
10 kg	47885	1 lb	\$295.00

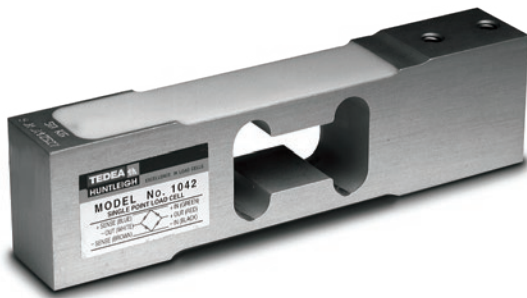
Dimensions

Rated Capacity	A	B	C	D	E	F
kg/mm						
5 to 10	117.9	93.7	25.4	33.3	32.5	1/4-20UNC x 10DP



Specifications

- Full Scale Output:**
2.0 mV/V
- Output Resistance:**
350 (± 3) ohm
- Input Resistance:**
415 (± 15) ohm
- Material/Finish:**
Anodized aluminum
- Temperature:**
Operating:
0 °F to 150 °F (-18 °C to 65 °C)
- Seal Type:**
Environmentally sealed, IP65
- Safe Overload:**
150% full scale
- Rated Excitation:**
5 to 10 VDC (15 V maximum)
- Combined Error:**
0.02% full scale
- Insulation Resistance:**
5,000 megohm
- Deflection at Capacity:**
0.4 mm
- Cable Length:**
1 m
- Cable Diameter:**
0.200 in
PVC jacket
- Cable Color Code:**
Green +Excitation
Black -Excitation
Red +Signal
White -Signal
Blue +Sense
Brown -Sense
- Max Platform Size:**
13.78 x 13.78 in
- Warranty:**
One-year limited
- Approvals:**
OIML
cFMus



Picture is a representation of actual product

Approvals



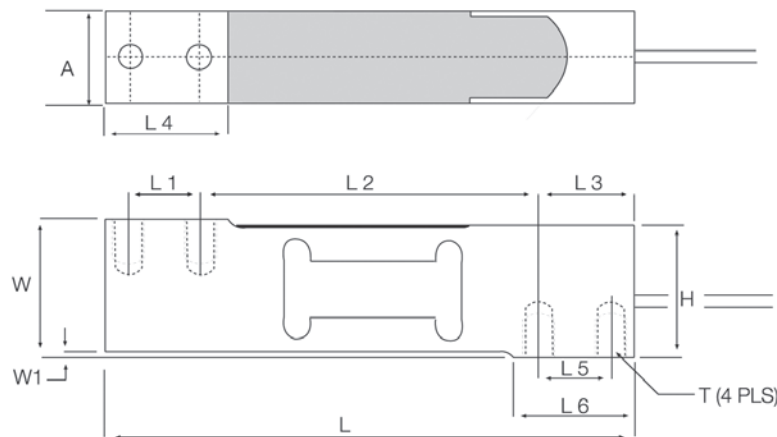
Available upon request

Order Information

Load Rating	Part #	Est. Weight	Price
1 kg	40680	2 lb	\$198.00
3 kg	40681	2 lb	\$198.00
5 kg	40682	2 lb	\$198.00
10 kg	40683	2 lb	\$198.00
15 kg	40684	2 lb	\$198.00
20 kg	40685	2 lb	\$198.00
30 kg	40686	2 lb	\$198.00
50 kg	40687	2 lb	\$198.00
75 kg	40688	2 lb	\$198.00
100 kg	40689	2 lb	\$198.00

Dimensions

Rated Capacity	A	H	L	L1	L2	L3	L4	L5	L6	W	W1	T
kg/mm												
1 to 30	20.0	39.0	150.0	19.0	100.0	25.0	34.0	19.0	34.0	40.0	1.0	1/4-20 UNC
50 to 100	25.2	39.0	150.0	19.0	100.0	25.0	34.0	19.0	34.0	40.0	1.0	1/4-20 UNC



Interchangeable Products

- RICE LAKE WEIGHING SYSTEMS
RL1042.....page 163
- RICE LAKE WEIGHING SYSTEMS
RL42018A.....page 171

Specifications

- Full Scale Output:**
2.0 mV/V
- Output Resistance:**
350 (± 3) ohm
- Input Resistance:**
415 (± 15) ohm
- Material/Finish:**
Aluminum
- Temperature:**
Compensated:
14 °F to 104 °F (-10 °C to 40 °C)
Operating:
0 °F to 150 °F (-18 °C to 65 °C)

Seal Type:
Environmentally sealed, IP66

Safe Overload:
150% full scale

Rated Excitation:
5 to 10 VDC (15 V maximum)

Combined Error:
0.02% full scale

Insulation Resistance:
2,000 megohm

Deflection at Capacity:
0.015 in

Cable Length:
10 ft

Cable Diameter:
0.200 in PVC jacket

Cable Color Code:
Green +Excitation
Black -Excitation
Red +Signal
White -Signal
Blue +Sense
Brown -Sense

Max Platform Size:
16 × 16 in

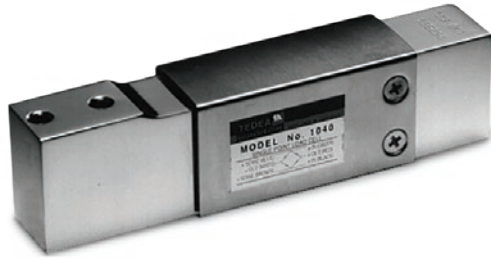
Warranty:
One-year limited

Approvals:
NTEP
OIML (available upon request)
cFMus

VPG®
TEDEA-HUNTLEIGH®

1040

Aluminum, Environmentally Sealed, NTEP Certified 1:5,000 Class III Single Cell, IP65



Picture is a representation of actual product

Approvals



Available upon request

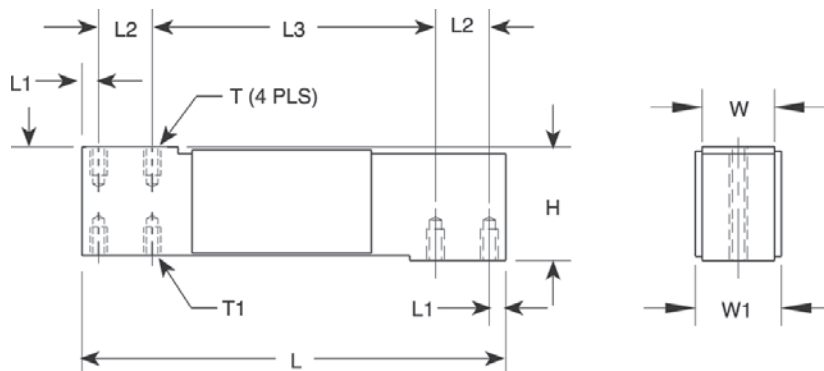
Available upon request

Order Information

Load Rating	Part #	Est. Weight	Price
NTEP Certified, Potted			
10 kg	33719	2 lb	\$210.00
15 kg	33720	2 lb	\$210.00
20 kg	33721	2 lb	\$210.00
30 kg	33722	2 lb	\$210.00
50 kg	33723	2 lb	\$210.00
100 kg	33724	2 lb	\$210.00
Non-NTEP Certified, Potted			
5 kg	17449	2 lb	\$200.00
7 kg	17483	2 lb	\$200.00
NTEP Certified, Unpotted			
7 kg	33726	2 lb	\$200.00

Dimensions

Rated Capacity	H	L	L1	L2	L3	T	T1	W	W1
kg/mm									
5 to 100	40.0	150.0	6.0	19.1	100.0	1/4-20 UNC × 10 DP	1/4-28 UNF × 10 DP	25.4	29.4



Interchangeable Products

RICE LAKE WEIGHING SYSTEMS

RL1040 page 164

METTLER TOLEDO®

0785

CARDINAL®

TSP

Specifications

Full Scale Output:

2.0 mV/V

Output Resistance:

350 (± 3) ohm

Input Resistance:

415 (± 15) ohm

Material/Finish:

Anodized aluminum

Temperature:

Compensated:

14 °F to 104 °F (-10 °C to 40 °C)

Operating:

0 °F to 150 °F (-18 °C to 65 °C)

Seal Type:

Environmentally sealed, IP65

Safe Overload:

200% at center loading point, full scale

Rated Excitation:

5 to 10 VDC (15 V maximum)

Combined Error:

0.02% full scale

Insulation Resistance:

2,000 megohm

Deflection at Capacity:

0.015 in

Cable Length:

10 ft

Cable Diameter:

0.200 in
PVC jacket

Cable Color Code:

Green +Excitation
Black -Excitation
Red +Signal
White -Signal
Blue +Sense
Brown -Sense

Max Platform Size:

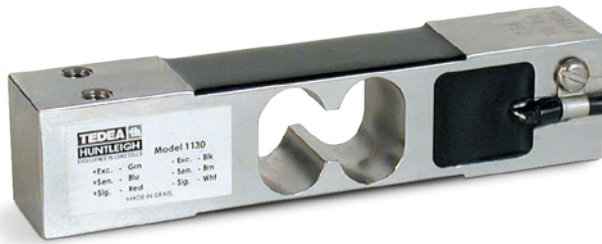
15.75 × 15.75 in

Warranty:

One-year limited

Approvals:

NTEP
OIML (Available upon request)
cFMus
Ex (Available upon request)



Picture is a representation of actual product

Approvals



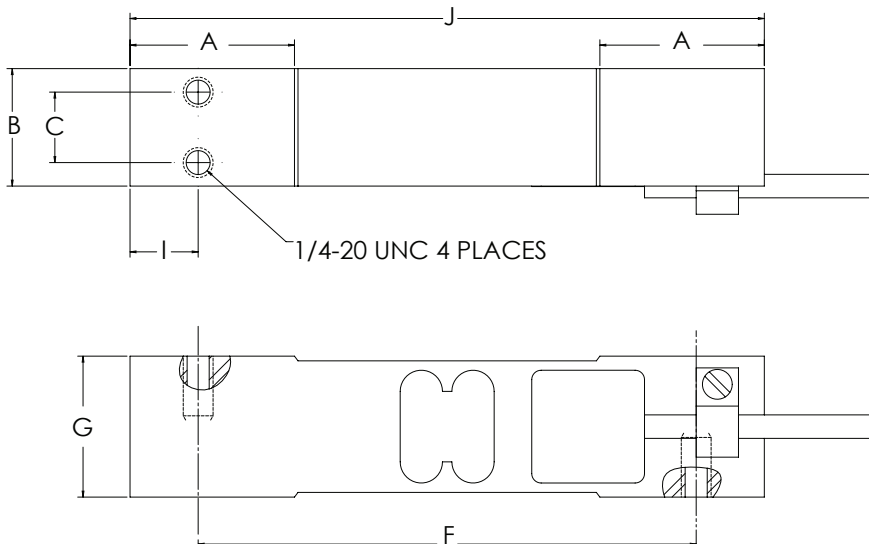
Order Information

Load Rating	Part #	Est. Weight	Price
1.5 m Cable			
7.5 kg	53485	2 lb	\$280.00
10 kg	112374	2 lb	\$280.00
15 kg	53486	2 lb	\$280.00
30 kg	53487	2 lb	\$280.00
50 kg	53488	2 lb	\$280.00
100 kg*	53490	2 lb	\$280.00
3 m Cable			
7.5 kg	111381	2 lb	\$290.00
10 kg	112365	2 lb	\$290.00
15 kg	114132	2 lb	\$290.00
30 kg	114133	2 lb	\$290.00
25 ft Cable Trimmed Outputs			
15 kg	124512	2 lb	\$325.00
30 kg	124513	2 lb	\$325.00

*Non-NTEP Certified

Dimensions

Rated Capacity	A	B	C	F	G	I	J
kg/mm							
7.5 to 100	35.0	25.0	15.0	106.0	30.0	14.5	135.0



Interchangeable Products

AVERY WEIGH-TRONIX®
MK29

Specifications

- Full Scale Output:** 2.0 mV/V
- Output Resistance:** 350 (± 3) ohm
- Input Resistance:** 385 (± 15) ohm
- Material/Finish:** Stainless steel
- Temperature:** Compensated: 14 °F to 104 °F (-10 °C to 40 °C)
Operating: 0 °F to 150 °F (-18 °C to 65 °C)
- Seal Type:** Environmentally sealed, IP66
- Safe Overload:** 200% full scale, at center loading point
- Rated Excitation:** 5 to 10 VDC (15 V maximum)
- Combined Error:** 0.02% full scale
- Insulation Resistance:** 2,000 megohm
- Deflection at Capacity:** 0.015 in
- Cable Length:** 1.5 m, 3 m, 25 ft
- Cable Diameter:** 0.200 in, PVC jacket
- Cable Color Code:** Green +Excitation, Black -Excitation, Red +Signal, White -Signal, Blue +Sense, Brown -Sense
- Max Platform Size:** 15.75 × 15.75 in
- Warranty:** One-year limited
- Approvals:** NTEP (100 kg is non-NTEP), cFMus

VPC®
TEDEA-HUNTLEIGH®

1140

Stainless Steel, Environmentally Sealed, Potted IP65



Picture is a representation of actual product

Approvals

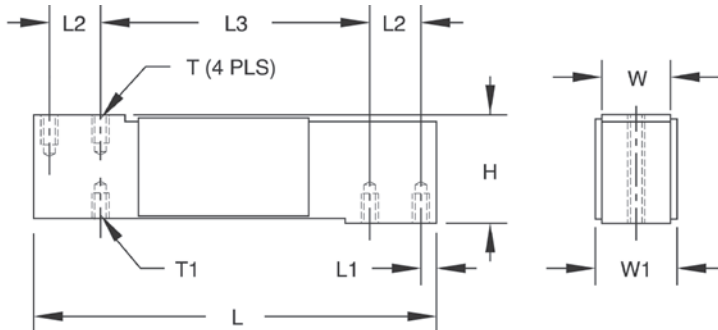


Order Information

Load Rating	Part #	Est. Weight	Price
15 kg	17451	3 lb	\$600.00
30 kg	17452	3 lb	\$600.00
75 kg	17485	3 lb	\$339.00
100 kg	17453	3 lb	\$600.00
150 kg	36466	3 lb	\$600.00

Dimensions

Rated Capacity	H	L	L1	L2	L3	T	T1	W	W1
kg/mm									
15 to 150	40.0	150.0	5.95	19.1	100.0	1/4-20 UNC × 10 DP	1/4-28 UNF × 10 DP	25.4	29.4



Interchangeable Products

RICE LAKE WEIGHING SYSTEMS
RL1140..... page 165

Specifications

- Full Scale Output:**
2.0 mV/V
- Output Resistance:**
350 (± 5) ohm
- Input Resistance:**
383 (± 15) ohm
- Material/Finish:**
Stainless steel
- Temperature:**
Compensated:
14 °F to 104 °F (-10 °C to 40 °C)
Operating:
0 °F to 150 °F (-18 °C to 65 °C)
- Seal Type:**
Environmentally sealed, IP65
- Safe Overload:**
150% at center loading point, full scale
- Rated Excitation:**
5 to 10 VDC (15 V maximum)
- Combined Error:**
0.02% full scale
- Insulation Resistance:**
2,000 megohm
- Deflection at Capacity:**
0.015 in
- Cable Length:**
10 ft
- Cable Color Code:**
Green +Excitation
Black -Excitation
Red +Signal
White -Signal
Blue +Sense
Brown -Sense
- Max Platform Size:**
15.75 × 15.75 in
- Warranty:**
One-year limited
- Approvals:**
cFMus

TEDEA-HUNTLEIGH® VPC®



Picture is a representation of actual product

Approvals

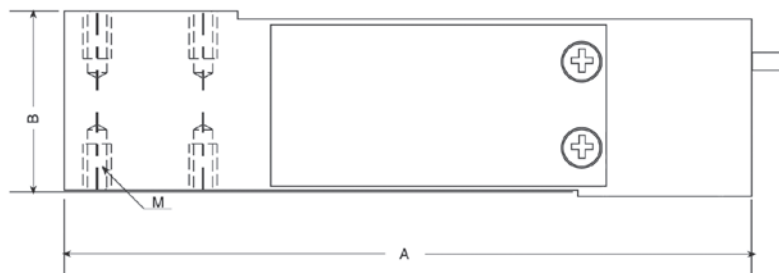
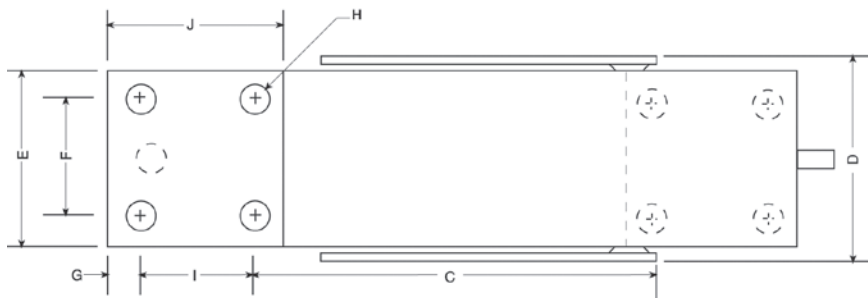


Order Information

Load Rating	Part #	Est. Weight	Price
200 kg	47880	3 lb	\$575.00
250 kg	47881	3 lb	\$575.00

Dimensions

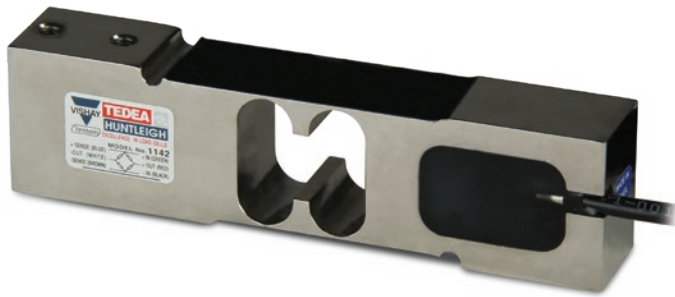
Rated Capacity	A	B	C	D	E	F	G	I	J	H	M
kg/mm											
200 to 250	150.1	39.9	86.6	43.4	38.1	25.4	6.35	25.4	38.1	1/4-20 UNC x 13 DP	1/4-28 UNF x 10 DP



Specifications

- Full Scale Output:**
2.0 mV/V
- Output Resistance:**
351 (± 5) ohm
- Input Resistance:**
380 (± 15) ohm
- Material/Finish:**
Stainless steel
- Temperature:**
Operating:
0 °F to 150 °F (-18 °C to 65 °C)
- Seal Type:**
Environmentally sealed, IP64
- Safe Overload:**
150% full scale
- Rated Excitation:**
5 to 10 VDC (15 V maximum)
- Combined Error:**
0.02% full scale
- Insulation Resistance:**
2,000 megohm
- Deflection at Capacity:**
0.015 in
- Cable Length:**
10 ft
- Cable Diameter:**
0.200 in
PVC jacket
- Cable Color Code:**
Green +Excitation
Black -Excitation
Red +Signal
White -Signal
Blue +Sense
Brown -Sense
- Max Platform Size:**
15.5 x 15.5 in
- Warranty:**
One-year limited
- Approvals:**
cFMus

VPC®
TEDEA-HUNTLEIGH®



Picture is a representation of actual product

Approvals



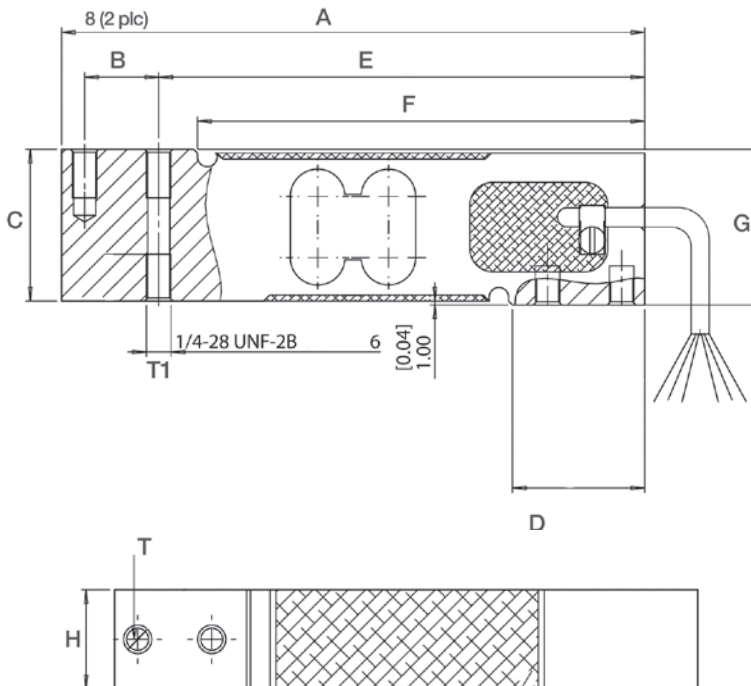
Order Information

Load Rating	Part #	Est. Weight	Price
10 kg	156361	3 lb	\$485.00
15 kg	156362	3 lb	\$485.00
20 kg	156363	3 lb	\$485.00
30 kg	156364	3 lb	\$485.00
50 kg	156365	3 lb	\$485.00
100 kg	156367	3 lb	\$485.00
150 kg	157809	3 lb	\$485.00

Metric threads available as an option

Dimensions

Rated Capacity	A	B	C	D	E	F	G	H	T	T1
kg/mm										
10 to 150	150.0	19.1	39.0	34.0	125.0	115.0	40.0	25.4	1/4-20 UNC	1/4-28 UNF



Interchangeable Products

RICE LAKE WEIGHING SYSTEMS

RLPWM15..... page 157

HBK®*

PW15..... page 229

*Color code is different

Specifications

Full Scale Output:

2.0 mV/V

Output Resistance:

351 (± 5.0) ohm

Input Resistance:

385 (± 10) ohm

Material/Finish:

Stainless steel

Temperature:

Compensated:

14 °F to 104 °F (-10 °C to 40 °C)

Operating:

0 °F to 150 °F (-18 °C to 65 °C)

Seal Type:

Environmentally sealed, IP66

Safe Overload:

150% full scale

Rated Excitation:

5 to 10 VDC nominal (15 V maximum)

Combined Error:

0.02% full scale

Insulation Resistance:

2,000 megohm

Deflection at Capacity:

0.015 in

Cable Length:

10 ft

Cable Diameter:

0.200 in

PVC Jacket

Cable Color Code:

Green +Excitation

Black -Excitation

Red +Signal

White -Signal

Blue +Sense

Brown -Sense

Max Platform Size:

16 × 16 in

Warranty:

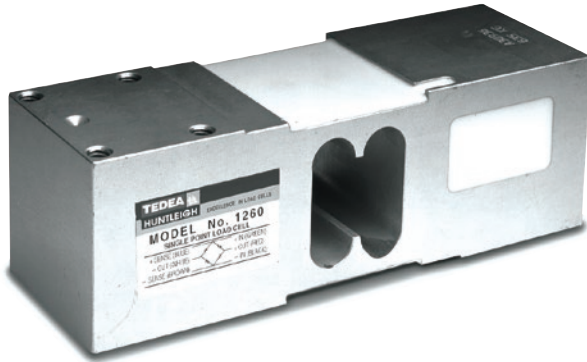
One-year limited

Approvals:

NTEP

OIML (Available upon request)

cFMus



Picture is a representation of actual product

Approvals



Available upon request

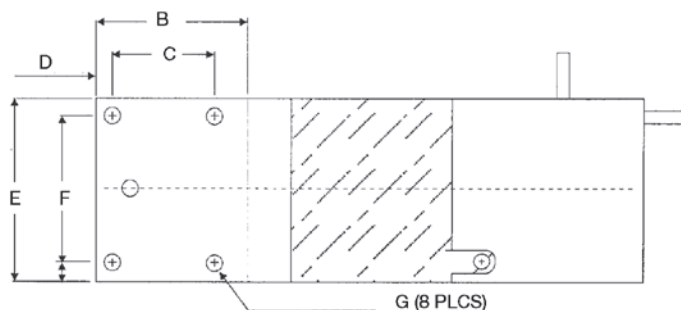
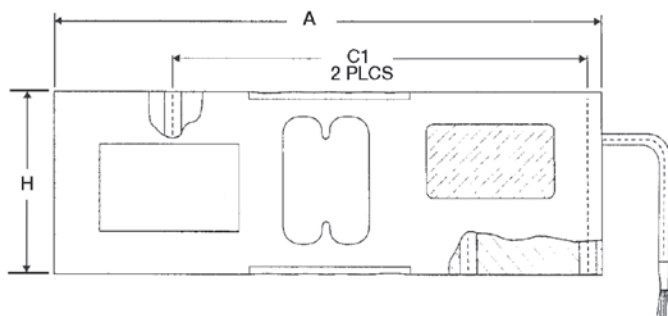
Available upon request

Order Information

Load Rating	Part #	Est. Weight	Price
50 kg	40769	5 lb	\$340.00
75 kg	40770	5 lb	\$340.00
100 kg	40771	5 lb	\$340.00
150 kg	159005	5 lb	\$340.00
200 kg	40772	5 lb	\$340.00
250 kg	40773	5 lb	\$340.00
300 kg	40774	5 lb	\$340.00
500 kg	40775	5 lb	\$340.00
635 kg	40776	5 lb	\$340.00

Dimensions

Rated Capacity	A	B	C	C1	D	E	F	G	H
kg/mm									
50 to 635	188.0	52.0	35.0	142.0	5.5	62.3	50.0	5/16-18 UNC	62.3



Interchangeable Products

- RICE LAKE WEIGHING SYSTEMS
RL1260
- RICE LAKE WEIGHING SYSTEMS
RLPWM16.....page 162
- VPG® TEDEA-HUNTLEIGH®
1260S.....page 320

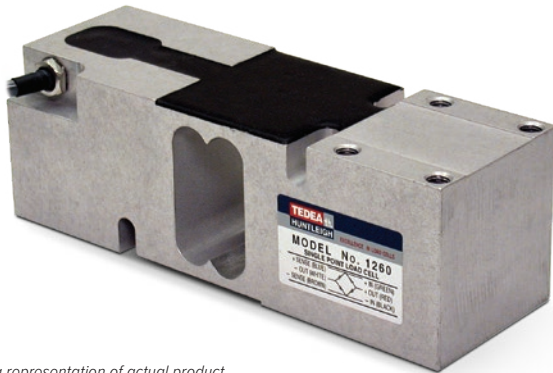
Specifications

- Full Scale Output:**
2.0 mV/V
- Output Resistance:**
350 (± 3) ohm
- Input Resistance:**
415 (± 15) ohm
- Material/Finish:**
Anodized aluminum
- Temperature:**
Compensated:
14 °F to 104 °F (-10 °C to 40 °C)
Operating:
0 °F to 150 °F (-18 °C to 65 °C)
- Seal Type:**
Environmentally sealed, IP67
- Safe Overload:**
150% of full scale at center loading point
- Rated Excitation:**
5 to 10 VDC (15 V maximum)
- Combined Error:**
0.02% full scale
- Insulation Resistance:**
2,000 megohm
- Cable Length:**
10 ft
- Cable Diameter:**
0.220 in
Polyurethane jacket
- Cable Color Code:**
Green +Excitation
Black -Excitation
Red +Signal
White -Signal
Blue +Sense
Brown -Sense
- Max Platform Size:**
24 × 24 in
- Warranty:**
One-year limited
- Approvals:**
NTEP
OIML (Available upon request)
cFMus
Ex (Available upon request)

VPG®
TEDEA-HUNTLEIGH®

SINGLE POINT
1260S

Aluminum, Environmentally Sealed, NTEP Certified 1:10,000 Class III Single Cell, IP66



Picture is a representation of actual product

Approvals

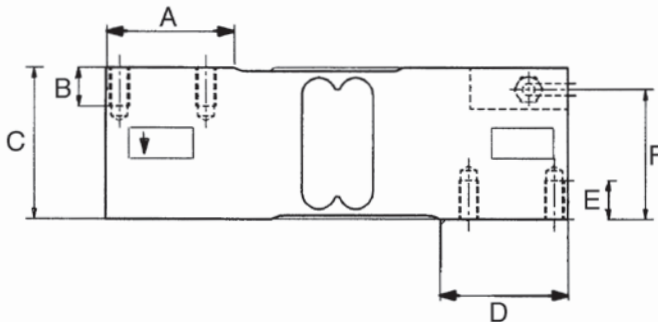


Order Information

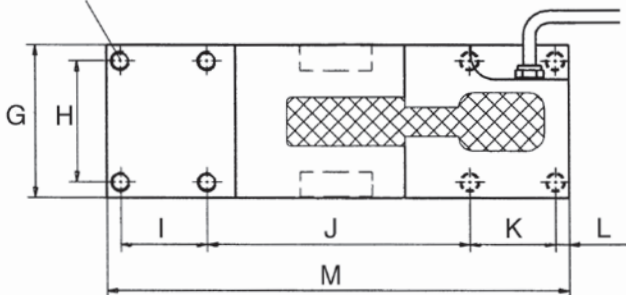
Load Rating	Part #	Est. Weight	Price
100 kg	76396	5 lb	\$350.00
150 kg	76397	5 lb	\$350.00
200 kg	76398	5 lb	\$350.00
250 kg	76399	5 lb	\$350.00
500 kg	76401	5 lb	\$350.00
635 kg	76402	5 lb	\$350.00

Dimensions

Rated Capacity	A	B	C	D	E	F	G	H	I	J	K	L	M
kg/mm													
100 to 635	52.0	16.0	62.3	52.0	16.0	52.3	63.0	50.0	35.0	107.0	35.0	5.5	188.0



5/16-18 UNC-2b (8pls)



Interchangeable Products

RICE LAKE WEIGHING SYSTEMS

RL1260

RICE LAKE WEIGHING SYSTEMS

RL26018A.....page 169

VPG® TEDEA-HUNTLEIGH®

1260.....page 319

Specifications

Full Scale Output:

2.0 mV/V

Output Resistance:

350 (± 3) ohm

Input Resistance:

415 (± 15) ohm

Material/Finish:

Anodized aluminum

Temperature:

Compensated:

14 °F to 104 °F (-10 °C to 40 °C)

Operating:

0 °F to 150 °F (-18 °C to 65 °C)

Seal Type:

Environmentally sealed, IP66

Safe Overload:

150% of full scale at center loading point

Rated Excitation:

5 to 10 VDC (15 V maximum)

Combined Error:

0.02% full scale

Insulation Resistance:

2,000 megohm

Cable Length:

10 ft

Cable Diameter:

0.220 in

Polyurethane jacket

Cable Color Code:

Green +Excitation

Black -Excitation

Red +Signal

White -Signal

Blue +Sense

Brown -Sense

Max Platform Size:

24 × 24 in

Warranty:

One-year limited

Approvals:

NTEP

cFMus

VPG®
TEDEA-HUNTLEIGH®



Picture is a representation of actual product

Approvals



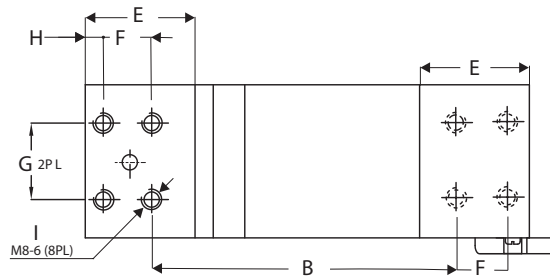
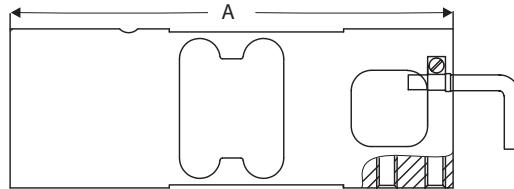
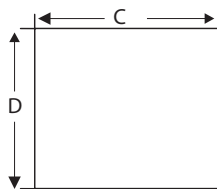
Available upon request

Order Information

Load Rating	Part #	Est. Weight	Price
50 kg	157478	5 lb	\$325.00
100 kg	157479	5 lb	\$325.00
150 kg	157480	5 lb	\$325.00
200 kg	157481	5 lb	\$325.00
250 kg	157482	5 lb	\$325.00
300 kg	157483	5 lb	\$325.00
500 kg	157484	5 lb	\$325.00
635 kg	157485	5 lb	\$325.00

Dimensions

Rated Capacity	A	B	C	D	E	F	G	H	I
kg/mm									
50 to 635 kg	174.0	122.0	60.0	62.5	43.0	19.0	30.0	7.0	M8-6



Interchangeable Products

TRANSCELL®
FAV

Specifications

Full Scale Output:
2 mV/V

Output Resistance:
350 (± 3) ohm

Input Resistance:
415 (± 15) ohm

Material/Finish:
Anodized aluminum

Temperature:
Operating:
0 °F to 150 °F (-18 °C to 65 °C)

Seal Type:
Environmentally sealed, IP66

Safe Overload:
150% of rated output

Rated Excitation:
10 VAC (15 V maximum)

Insulation Resistance:
2,000 megohm

Cable Length:
1.5 m

Cable Diameter:
5 mm
PVC jacket

Cable Color Code:
Green +Excitation
Black -Excitation
Red +Signal
White -Signal

Max Platform Size:
610 × 610 mm

Warranty:
One-year limited

Approvals:
OIML
Ex (Available upon request)

VPG®
TEDEA-HUNTLEIGH®

1250

Aluminum, Environmentally Sealed, NTEP Certified 1:5,000 Class III Single Cell, Potted, IP67



Picture is a representation of actual product

Approvals



Available upon request

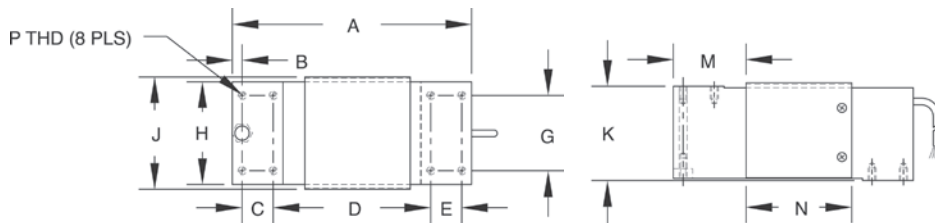
Available upon request

Order Information

Load Rating	Part #	Est. Weight	Price
NTEP Certified, 10 ft Cable			
50 kg	17478	6 lb	\$375.00
75 kg	17469	6 lb	\$375.00
100 kg	33711	6 lb	\$375.00
150 kg	33712	6 lb	\$375.00
200 kg	33713	6 lb	\$375.00
250 kg	33714	6 lb	\$375.00
300 kg	33715	6 lb	\$375.00
500 kg	33716	6 lb	\$375.00
635 kg	33717	6 lb	\$375.00
1,000 kg	17480	6 lb	\$375.00
Non-NTEP Certified, 25 ft Cable			
50 kg	40944	6 lb	\$375.00
75 kg	40945	6 lb	\$375.00
100 kg	40946	6 lb	\$375.00
150 kg	32342	6 lb	\$375.00
200 kg	32341	6 lb	\$375.00
250 kg	40947	6 lb	\$375.00
300 kg	32340	6 lb	\$375.00

Dimensions

Rated Capacity	A	B	C	D	E	G	H	J	K	M	N	P
kg/mm												
50 to 1,000	191.0	11.0	25.0	125.0	25.0	60.0	75.0	82.0	75.0	57.5	85.0	5/16-18 UNC x 15DP



Interchangeable Products

RICE LAKE WEIGHING SYSTEMS
RL1218A..... page 170

RICE LAKE WEIGHING SYSTEMS
RL1250

FLINTEC®
PCB*..... page 214

TRANSCELL®
FAY

*Stainless steel, hermetically sealed

Specifications

Full Scale Output:
2.0 mV/V

Bridge Resistance:
350 ohm, nominal

Material/Finish:
Anodized aluminum

Temperature:
 Compensated:
 14 °F to 104 °F (-10 °C to 40 °C)
 Operating:
 0 °F to 150 °F (-18 °C to 65 °C)

Seal Type:
Environmentally sealed, IP67

Safe Overload:
150% of full scale at center loading point

Safe Overload:
150% of full scale at center loading point

Rated Excitation:
5 to 10 VDC (15 V maximum)

Combined Error:
0.02% full scale

Insulation Resistance:
2,000 megohm

Deflection at Capacity:
0.015 in

Cable Length:
10 ft
25 ft

Cable Diameter:
0.200 in
PVC jacket

Cable Color Code:
 Green +Excitation
 Black -Excitation
 Red +Signal
 White -Signal
 Blue +Sense
 Brown -Sense

Max Platform Size:
 50 to 500 kg: 800 × 800 mm
 635 to 1,000 kg: 600 × 600 mm

Warranty:
One-year limited

Approvals:
 NTEP
 OIML (Available upon request)
 cFMus
 Ex (Available upon request)



Picture is a representation of actual product

Approvals



Available upon request

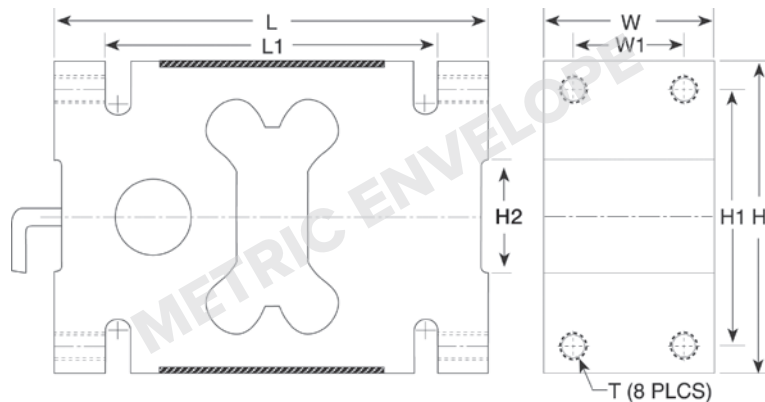
Available upon request

Order Information

Load Rating	Part #	Est. Weight	Price
1,000 kg	29908	9 lb	\$795.00
1,500 kg	29909	9 lb	\$795.00
2,000 kg	29910	9 lb	\$795.00

Dimensions

Rated Capacity	H	H1	H2	L	L1	T	W	W1
kg/mm								
1,000 to 2,000	126.0	95.0	45.0	176.0	135.0	M16 × 2-6H	76.0	46.0



Specifications

Full Scale Output:

2.0 mV/V

Output Resistance:

350 (± 3) ohm

Input Resistance:

415 (± 15) ohm

Material/Finish:

Aluminum alloy

Temperature:

Compensated:

14 °F to 104 °F (-10 °C to 40 °C)

Operating:

0 °F to 150 °F (-18 °C to 65 °C)

Seal Type:

Environmentally sealed, IP66

Safe Overload:

150% full scale

Rated Excitation:

5 to 10 VDC (15 V maximum)

Combined Error:

0.02% full scale

Insulation Resistance:

2,000 megohm

Deflection at Capacity:

0.38 mm

Cable Length:

5 m

Cable Diameter:

5.9 mm

Polyurethane jacket

Cable Color Code:

Green +Excitation

Black -Excitation

Red +Signal

White -Signal

Blue +Sense

Brown -Sense

Max Platform Size:

102 × 102 mm

Warranty:

One-year limited

Approvals:

NTEP

OIML (Available upon request)

cFMus

Ex (Available upon request)

VPC®
TEDEA-HUNTLEIGH®



Picture is a representation of actual product

Approvals

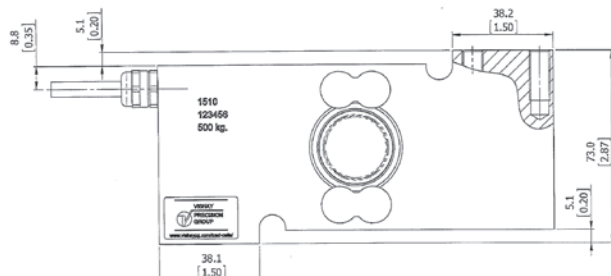
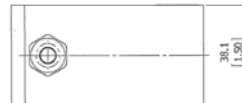
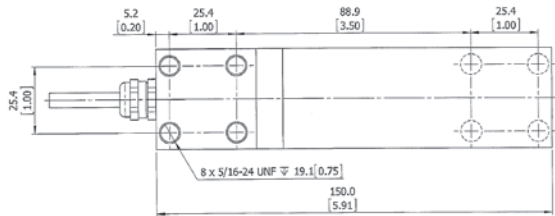
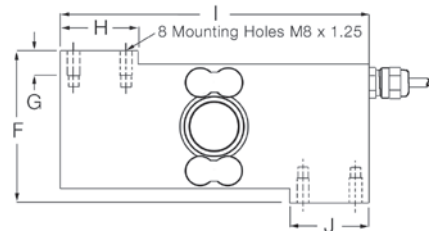
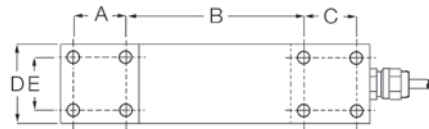


Order Information

Load Rating	Part #	Est. Weight	Price
OIML			
100 kg	65851	6 lb	\$850.00
250 kg	65852	6 lb	\$850.00
500 kg	65853	6 lb	\$850.00
NTEP Certified			
500 kg	167585	6 lb	\$850.00

Dimensions

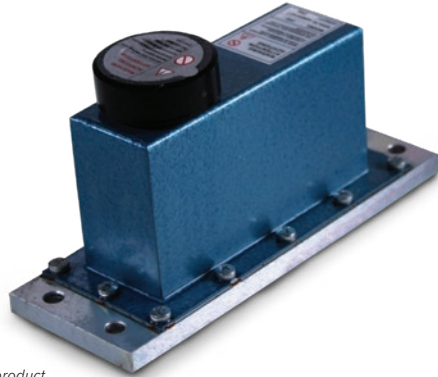
Rated Capacity	A	B	C	D	E	F	G	H	I	J
kg/mm										
100 to 500	25.4	86.3	25.4	38.1	25.4	72.8	11.9	38.1	149.9	38.1



Specifications

- Full Scale Output:**
2.0 mV/V
- Output Resistance:**
350 (± 3) ohm
- Input Resistance:**
380 (± 10) ohm
- Material/Finish:**
Stainless steel
- Temperature:**
Compensated:
14 °F to 104 °F (-10 °C to 40 °C)
Operating:
0 °F to 150 °F (-18 °C to 65 °C)
- Seal Type:**
Welded-seal, IP68
- Safe Overload:**
150% at center loading point, full scale
- Rated Excitation:**
5 to 10 VDC (15 V maximum)
- Combined Error:**
0.020% full scale
- Insulation Resistance:**
2,000 megohm
- Cable Length:**
3 m
6 m: pn 167585
- Cable Diameter:**
5.6 mm
Polyurethane jacket
- Cable Color Code:**
Green +Excitation
Black -Excitation
Red +Signal
White -Signal
Blue +Sense
Brown -Sense
- Max Platform Size:**
600 × 600 mm
- Warranty:**
One-year limited
- Approvals:**
NTEP
OIML
cFMus

VPC®
TEDEA-HUNTLEIGH®



Picture is a representation of actual product

Approvals



Available upon request

Order Information

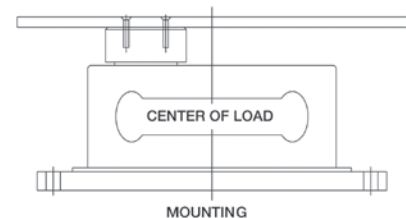
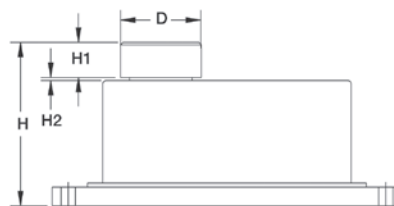
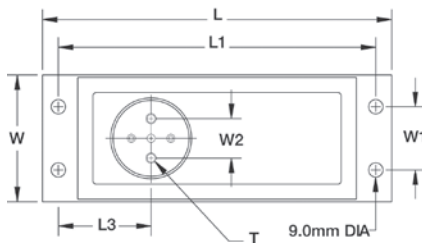
Load Rating	Part #	Est. Weight	Price
Stainless Steel			
2 kg*	17567	8 lb	\$885.00
5 kg	17568	8 lb	\$885.00
7 kg	17569	8 lb	\$885.00
10 kg	17570	8 lb	\$885.00
15 kg	17571	8 lb	\$885.00
20 kg	17572	8 lb	\$885.00
30 kg	17573	8 lb	\$885.00
50 kg	17574	8 lb	\$885.00
Alloy Steel			
2 kg*	17559	8 lb	\$775.00
5 kg	17560	8 lb	\$775.00
7 kg	17561	8 lb	\$775.00
10 kg	17562	8 lb	\$775.00
15 kg	17563	8 lb	\$775.00
20 kg	17564	8 lb	\$775.00
30 kg	17565	8 lb	\$775.00
50 kg	17566	8 lb	\$775.00

*Non-NTEP Certified

Note: The special fluid damped operation is particularly well-suited for applications where quick weighing is required, e.g., checkweighers

Dimensions

Rated Capacity	D	H	H1	H2	L	L1	L3	T	W	W1	W2
kg/mm											
2 to 50	50 dia	115.0	21.0	2.0	220.0	200.0	58.5	1/4-20 UNC x 10 DP	80.0	40.0	25.0



Interchangeable Products

RICE LAKE WEIGHING SYSTEMS®
RL260FD*page 168

*3000d NTEP, 16.4 ft cable

Specifications

Full Scale Output:
2.0 mV/V

Output Resistance:
350 (± 3) ohm

Input Resistance:
415 (± 15) ohm

Material/Finish:
Anodized aluminum in alloy steel or stainless steel

Temperature:
Compensated:
14 °F to 104 °F (-10 °C to 40 °C)
Operating:
0 °F to 150 °F (-18 °C to 65 °C)

Seal Type:
Environmentally sealed, IP66

Safe Overload:
150% at center loading point, full scale

Rated Excitation:
5 to 10 VDC (15 V maximum)

Combined Error:
0.025% full scale

Insulation Resistance:
2,000 megohm

Cable Length:
10 ft

Cable Diameter:
0.370 in
PVC jacket

Cable Color Code:
Green +Excitation
Black -Excitation
Red +Signal
White -Signal
Blue +Sense
Brown -Sense

Warranty:
One-year limited

Approvals:
NTEP
OIML (Available upon request)

VPG®
TEDEA-HUNTLEIGH®



Picture is a representation of actual product

Approvals



Order Information

Load Rating	Part #	Est. Weight	Price
3 kg	Consult	7 lb	\$1,150.00
5 kg	Consult	7 lb	\$1,150.00
7 kg	Consult	7 lb	\$1,150.00
10 kg	Consult	7 lb	\$1,150.00
15 kg	Consult	7 lb	\$1,150.00
20 kg	Consult	7 lb	\$1,150.00
30 kg	Consult	7 lb	\$1,150.00
50 kg	Consult	7 lb	\$1,150.00

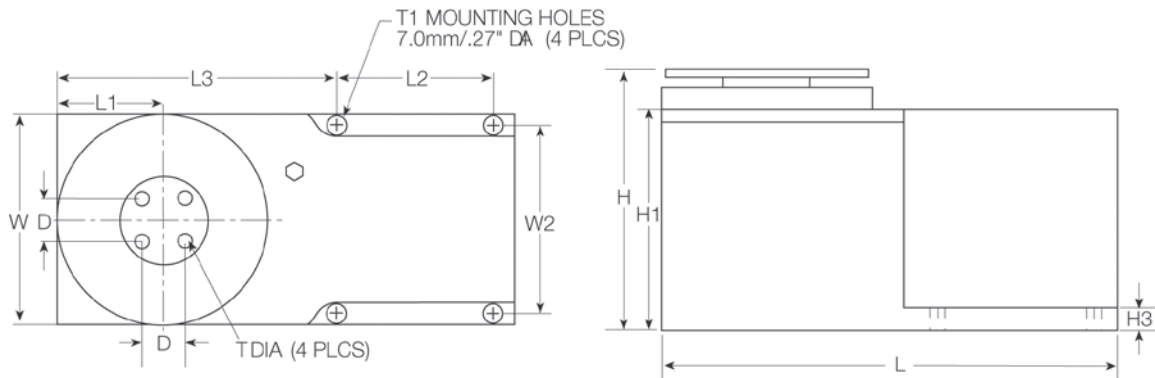
Note: The special fluid damped operation is particularly well-suited for applications where quick weighment is required, e.g., checkweighers

9010 load cells are custom-manufactured per specific application requirements; use the Application Definition Form on page 327 of this section as well as online at www.ricelake.com/questionnaires to define your applications

Available in stainless steel with breather vent option for washdown applications

Dimensions

Rated Capacity	D	H	H1	H3	L	L1	L2	L3	T	W	W2
kg/mm											
3 to 50	19.1	115.2	97.3	10.0	199.5	46.0	71.5	119.8	1/4-20 UNC x 20 DP	92.0	82.0



Specifications

Full Scale Output:
2.0 mV/V

Output Resistance:
350 (± 5) ohm

Input Resistance:
415 (± 15) ohm

Material/Finish:
Aluminum

Temperature:
Operating:
0 °F to 150 °F (-18 °C to 65 °C)

Seal Type:
Environmentally sealed, IP65

Safe Overload:
800% full scale downward,
400% full scale upward

Rated Excitation:
15 VDC (15 V maximum)

Combined Error:
0.03% full scale

Insulation Resistance:
5,000 megohm

Cable Length:
3 ft

Cable Diameter:
0.370 in
PVC jacket

Cable Color Code:
Green +Excitation
Black -Excitation
Red +Signal
White -Signal
Blue +Sense
Brown -Sense

Warranty:
One-year limited

Approvals:
cFMus

VPG Tedeo-Huntleigh Model 9010 Application



Customer Number:

Company:

Order Number:

Name:

Date (DD/MM/YYYY):

Phone:

Fax:

Email:

Self-Contained Weighing Module

Application: Number of Units:

Total Tare Weight (dead load): kg For Each Unit: kg

Total Useful Weight (live load): kg For Each Unit: kg

Describe Live Load (powder, fruit, screws, etc.):

Required Settling Time: m/sec Accuracy: m/sec

Operating Temperature Range: °C

Mounting Threads: mm (6 × 1) inch (¼ UNC)

Preferred Load Cell, if any:

Checkweigher (Reference sketch below)

Size of Conveyor Platform

Width: cm B: cm

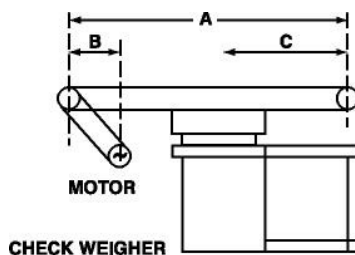
A: cm C: cm

Belt Speed: cm/sec

Size of Weighed Product in Movement Direction: cm

Tare Weigh Distribution

Conveyor: kg Motor: kg



Hopper or Other Application (Reference sketch below)

Center of Gravity (CG) of Dead Load (Estimate if necessary)

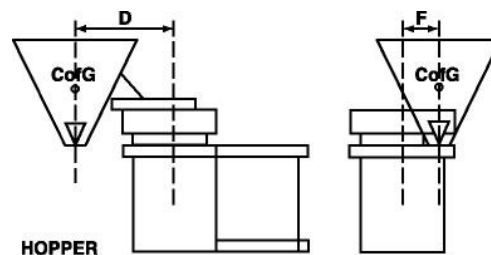
D: cm F: cm

Loading Position

D: cm F: cm

Drop Height: cm

If load CG varies, maximum distance between extremes: cm



Special Requirements

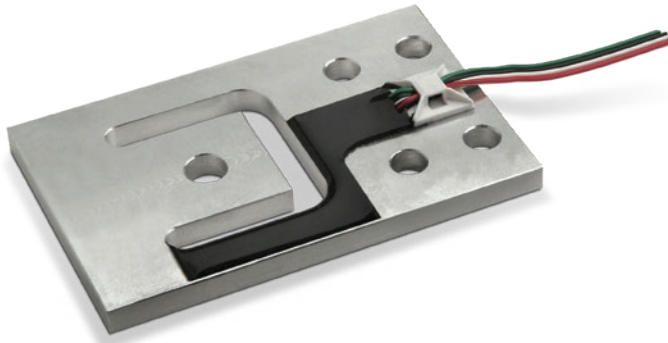
Cable Length if not Standard (1 m): Delivery Requested:

Corners Accuracy: Test Weight (max. allowed ⅓ of load cell capacity): kg

Distance from Center (variation allowed): cm

380

Aluminum, Environmentally Sealed, NTEP Certified 1:4,000 III Single Cell / 1:5,000 III Multiple Cell, IP65



Picture is a representation of actual product

Approvals



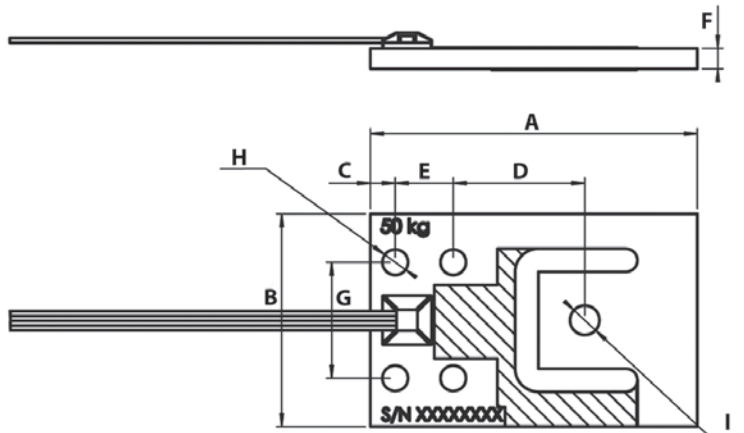
Available upon request

Order Information

Load Rating	Part #	Est. Weight	Price
7.5 kg	112921	1 lb	\$140.00
15 kg	186687	1 lb	\$142.00
37.5 kg	112922	1 lb	\$142.00
50 kg	112923	1 lb	\$145.00
75 kg	112924	1 lb	\$145.00
150 kg	112925	1 lb	\$150.00

Dimensions

Rated Capacity	A	B	C	D	E	F	G	H	I
kg/mm									
7.5	70.0	39.0	4.9	28.0	14.0	2.5	27.8	5.1	5.1
15.0	70.0	39.0	4.9	28.0	14.0	4.1	27.8	5.1	5.1
37.5	76.2	44.5	6.0	29.3	15.0	4.8	30.0	6.6	6.2
50.0	84.5	55.0	6.4	34.0	15.0	5.3	30.0	6.6	7.6
75.0	84.5	55.0	6.4	34.0	15.0	6.4	30.0	6.6	7.6
150.0	107.5	70.0	7.8	45.9	22.8	8.0	44.5	8.1	8.2



Specifications

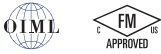
- Full Scale Output:**
1.0 mV/V
- Output Resistance:**
1,000 (± 10) ohm
- Input Resistance:**
1,160 (± 15) ohm
- Material/Finish:**
Aluminum
- Temperature:**
Compensated:
14 °F to 104 °F (-10 °C to 40 °C)
Operating:
0 °F to 150 °F (-18 °C to 65 °C)
- Seal Type:**
Environmentally sealed, IP65
- Safe Overload:**
150% full scale
- Rated Excitation:**
5 to 10 VDC
- Insulation Resistance:**
5,000 megohm
- Cable Length:**
1.5 m flat ribbon type, PVC
- Cable Color Code:**
Green +Excitation
Black -Excitation
Red +Signal
White -Signal
- Warranty:**
One-year limited
- Approvals:**
NTEP
OIML (available upon request)

TEDEA-HUNTLEIGH® VPC®



Picture is a representation of actual product

Approvals

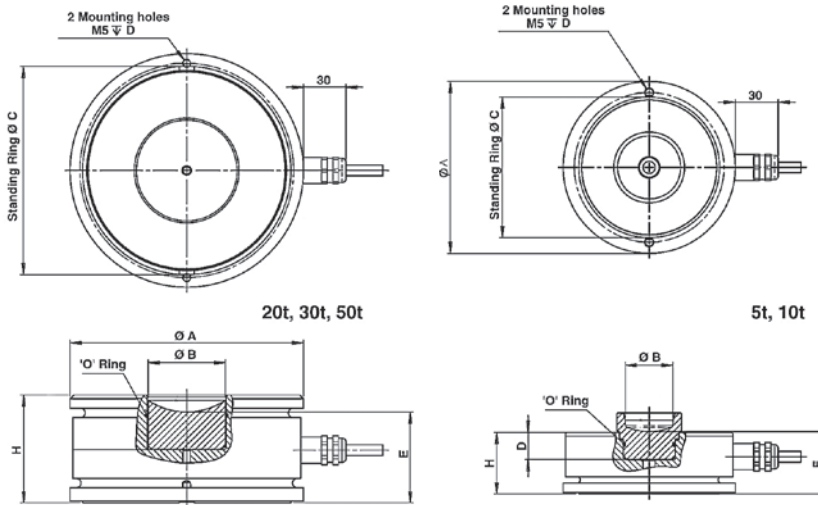


Order Information

Load Rating	Part #	Est. Weight	Price
5,000 kg	65854	3 lb	\$1,625.00
10,000 kg	65855	5 lb	\$1,925.00
20,000 kg	65856	8 lb	\$1,925.00
30,000 kg	65857	8 lb	\$1,925.00

Dimensions

Rated Capacity	A	B	C	D	E	H
kg/mm						
5,000	80.0	19.0	70.0	20.0	33.4	30.0
10,000	92.0	28.0	80.0	14.6	33.4	33.0
20,000 to 30,000	110.0	29.0	101.5	26.3	39.0	50.0



Interchangeable Products

AVERY WEIGH-TRONIX®
220

Weigh Module Available

RICE LAKE WEIGHING SYSTEMS
220..... page 45

Specifications

- Full Scale Output:**
2.0 mV/V
- Output Resistance:**
1,025 (± 20) ohm
- Input Resistance:**
1,065 (± 60) ohm
- Material/Finish:**
Stainless steel
- Temperature:**
Compensated:
14 °F to 104 °F (-10 °C to 40 °C)
Operating:
0 °F to 150 °F (-18 °C to 65 °C)
- Seal Type:**
Hermetically sealed, IP68
- Safe Overload:**
150% at center loading point, full scale
- Rated Excitation:**
5 to 10 VDC (15 V maximum)
- Combined Error:**
0.020% full scale
- Insulation Resistance:**
2,000 megohm
- Deflection at Capacity:**
< 0.5 mm at full scale
- Cable Length:**
5,000 kg: 5 m
10,000 to 20,000 kg: 10 m
30,000 kg: 20 m
- Cable Diameter:**
5.6 mm
Polyurethane jacket
- Cable Color Code:**
Blue +Excitation
Black -Excitation
White +Signal
Red -Signal
Green +Sense
Gray -Sense
- Warranty:**
One-year limited
- Approvals:**
OIML
cFMus

VPC®
TEDEA-HUNTLEIGH®



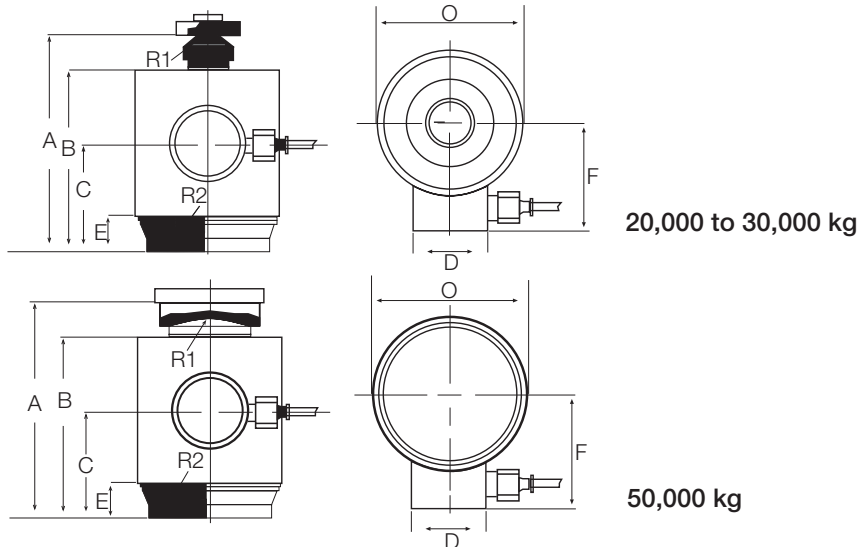
Picture is a representation of actual product

Order Information

Load Rating	Part #	Est. Weight	Price
20,000 kg	169233	10 lb	\$995.00
30,000 kg	169234	10 lb	\$995.00
50,000 kg	169235	13 lb	\$995.00

Dimensions

Rated Capacity	A	B	C	D	E	F	O	R1	R2
kg/mm									
20,000	138.3	112.3	72.3	50.0	32.3	69.0	88.0	15.0	150.0
30,000	138.3	112.3	72.3	50.0	32.3	69.0	88.0	15.0	150.0
50,000	155.5	115.8	74.0	50.0	32.3	69.0	88.0	35.0	300.0



Specifications

- Full Scale Output:**
1.5 mV/V
- Output Resistance:**
605 (± 5) ohm
- Input Resistance:**
670 (± 15) ohm
- Material/Finish:**
Stainless steel
- Temperature:**
Operating:
-0 °F to 150 °F (-18 °C to 65 °C)
- Seal Type:**
Environmentally sealed, IP68
- Safe Overload:**
150% full scale
- Rated Excitation:**
5 to 10 VDC
- Combined Error:**
0.02% of applied load
- Insulation Resistance:**
2,000 megohm
- Cable Length:**
15 m
- Cable Color Code:**
Green +Excitation
Black -Excitation
Red +Signal
White -Signal
Blue +Sense
Brown -Sense
- Warranty:**
One-year limited